



Welcome guide 2011-2012



universiteit
▶ hasselt



Welcome guide Hasselt University for international students 2011-2012

WELCOME	4
HASSELT, DIEPENBEEK AND BELGIUM IN A NUTSHELL	
1. Language	6
2. Climate	7
3. Hasselt	7
HASSELT UNIVERSITY, CAMPUS DIEPENBEEK (UHASSELT)	
1. Introduction	8
2. Academic calendar	9
3. International faculty contact	10
4. Psycho-social support	10
5. Language courses	10
PRACTICAL INFORMATION	
1. Administration	11
2. Health insurance and health care	13
3. Accommodation	14
4. University restaurant	14
5. Library	14
6. Internet – Email	14
7. Student unions	14
8. Travel	16
9. Traffic rules	18
10. Phones	18
11. Sports and cultural activities	19
12. Student jobs	22
13. Useful addresses	23
14. Useful translations	25



Welcome to Hasselt University !

You have chosen Hasselt University to complete a part of your studies. Congratulations, thank you and welcome. As you will soon find out, our university deserves its reputation in hospitality.

Hasselt University is a young and dynamic institution, located in a green environment at a junction of European cultures. The Netherlands, Germany and the French speaking part of Belgium are very near. Hasselt itself is a cosmopolitan town, with lots of exciting opportunities.

The present guidebook should help you with your first contact with Belgium, Diepenbeek and Hasselt. It includes practical information and provides answers to questions about accommodation, transport and administrative steps. We hope it will make it easier for you to find your place among the Flemish students.

Throughout your visit, our team will be available to help you so that your visit to our university is as successful as possible, both from an academic and a personal point of view. We wish you a pleasant stay and lots of success!

Regards,

The International team.

Contact: e-mail: internationaloffice@uhasselt.be Tel: +32 11 26 81 76

Useful contacts at our university



Administration

Martine Machiels
Support international students
martine.machiels@uhasselt.be



Erika Vandersmissen
Support exchange students (e.g. Erasmus)
erika.vandersmissen@uhasselt.be



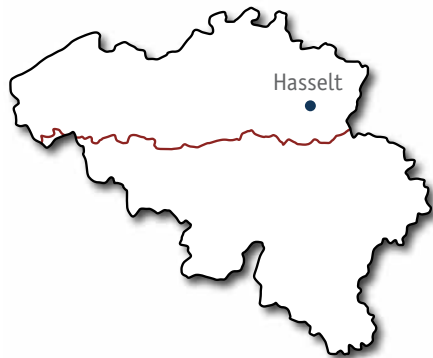
Services (e.g. accommodation, insurance)

Marc Thoelen
Support international students and staff
marc.thoelen@uhasselt.be

Hasselt, Diepenbeek and Belgium in a nutshell!

1. Language

The three official languages of Belgium are Dutch, French and German. Hasselt and Diepenbeek are located in the Dutch-speaking part of the country. Belgians are proud of their language skills. Three quarters of the population speak at least two languages. A slightly smaller percentage can express itself fluently in at least three languages. Handy, if you are coming to Belgium to study or work!





2. Climate

Belgium has a temperate climate characterized by mild winters and cool summers. The climate is probably not the reason why you chose to study in Hasselt, since the weather is often unpredictable. Visitors can expect a downpour any time of the year. Snow is possible, but not frequent in winter.



TIP: Waterproof clothing is useful at any time of the year.

3. Hasselt

When you say the word Hasselt, local people immediately think of jenever, 'speculaas' (a typical spiced almond cookie) and free bus rides. Over the past years Hasselt has grown into a hip, trendy city. Hasselt is the ideal city for those who love shopping, culinary treats and a dash of culture. In the modern cinema complex "Kinopolis" with 14 auditoriums, you can enjoy the latest films in ideal circumstances. For theatre, literature, contemporary dance and classical music you can visit the cultural centre of Hasselt. The Japanese garden and the nature domain Kiewit are a treat for nature lovers.

<http://toerisme.hasselt.be/en>



TIP: all buses between Hasselt and campus Diepenbeek are free of charge for students and staff of Hasselt University. Just show your student or staff card.

Hasselt University, campus Diepenbeek (UHasselt)



1. Introduction

Hasselt University, established in 1971, is an independent, enterprising university that chooses active education tailored to the student. It focuses on top research, entrepreneurship and innovation.

Academic and scientific freedom, social commitment, attention for ethical norms and interpretation – without ideological distinction- are basic principles of both education and research at Hasselt University.

Approximately 3.000 students, 600 teaching and research staff and 300 administrative and technical staff are connected to Hasselt University.

Hasselt University offers study programmes in its 4 faculties: faculty of Business Economics, faculty of Sciences, faculty of Medicine and faculty of Law.

2. Academic calendar 2011-2012

International students are most likely to participate in the semester system. More detailed calendars: <http://www.uhasselt.be/Academic-calendars>

ACADEMIC SCHEDULE 2011-2012

FIRST SEMESTER

Teaching Period

From 26 September 2011 to 13 January 2012

Holidays

From 24 December 2011 to 8 January 2012

Study/Exams

From 16 January 2012 to 4 February 2012

Leave or Project

From 6 February 2012 to 12 February 2012

SECOND SEMESTER

Teaching Period

From 13 February 2012 to 2 June 2012

Holidays

From 2 April 2012 to 15 April 2012

Study/Exams

From 11 June 2012 to 6 July 2012

RE-EXAMINATIONS

From 13 August 2012 to 8 September 2012

Leave

- Monday 31 October, Tuesday and Wednesday 1 and 2 November 2011 (All Saints)
- Friday 11 November 2011 (Armistice)
- Monday 30 April and Tuesday 1 May 2012 (Labor Day)
- Thursday 17 May and Friday 18 May 2012 (Ascension Day)
- Monday 28 May 2012 (Pentecost)
- Wednesday 11 July 2012 (Flemish Holiday)
- Sunday 21 July 2012 (National Holiday)
- Wednesday 15 August 2012 (Assumption)



It is very important to start attending classes in time at the beginning of each semester. In case of arrival at Hasselt University later than 15 days after the semester beginning, you can be refused as a student by the faculty.

3. International faculty contact

If you have questions concerning your choice of subjects, exam schedules or other academic matters, please contact the following persons:

- *Faculty of Business Economics*
 - Economics: rachel.moreau@uhasselt.be
 - Transportation Sciences: nadine.smeyers@uhasselt.be
- *Faculty of Sciences*: isabel.thys@uhasselt.be
- *Faculty of Medicine*: astrid.waterinckx@uhasselt.be
- *Faculty of Law*: beatrix.engelen@uhasselt.be

4. Psycho-social support

Students seeking support or advice in personal, social, relational or psychological matters can contact our resident social assistant Liesbeth Huber: liesbeth.huber@uhasselt.be

5. Language courses

Every foreign student and visitor can subscribe to a course of 'Basic Dutch'. This course will be organised by an external organisation from October 2011 through January 2012 and from February 2012 through June 2012. The cost is approximately 60 euro for one semester.

The courses are on a week evening.

If you would like to tackle still another language, the language institute 'PCVO-Moderne Talen' offers several other language courses (Arabic, Chinese, German, English, French, Greek, Italian, Japanese, Croatian, Polish, Portugese, Russian, Serbian, Spanish, Turkish and Swedish). The tuition fee is very low.

FOR MORE INFO AND REGISTRATION : marc.thoelen@uhasselt.be



Practical information

1. Administrative formalities

Registration at town hall

On arrival in Belgium all foreign nationals staying longer than one month must register at their local town hall *within eight working days*.

	DIEPENBEEK, DORPSTRAAT 14		HASSELT, GROENPLEIN 1	
	AM	PM	AM	PM
Monday	08.30-12.00		09.00-12.30	13.30-16.00*
Tuesday	08.30-12.00	13.00-19.00	09.00-12.30	13.30-16.00
Wednesday	08.30-12.00	13.00-16.30	09.00-12.30	13.30-16.00
Thursday		13.00-16.30	09.00-12.30	13.30-16.00
Friday	08.30-12.00		09.00-12.30	13.30-16.00

* Also evening on appointm.

	Documents required	Documents to receive
EU-citizen < 3 months	<ul style="list-style-type: none"> - passport or identity card - proof of enrollment Hasselt University - copy of your rent contract or correct address 	“melding van aanwezigheid” (announcement of presence)
EU-citizen >3 months	<ul style="list-style-type: none"> - passport or identity card - 2 passport photographs - proof of enrollment Hasselt University - EHI-card or proof of insurance - proof of scholarship or proof of enrollment as Erasmusstudent or a declaration on honour of proof of solvency is also accepted - copy of your rent contract of correct address 	“verklaring van inschrijving” (statement of registration)
Non-EU-citizen < 3 months	<ul style="list-style-type: none"> - passport with visa C (if required) - 1 passport photograph - proof of enrollment Hasselt University - copy of your rent contract or correct address 	“aankomstverklaring” (statement of arrival) valid for 90 days
Non-EU-citizen > 3 months	<ul style="list-style-type: none"> - passport with visa D - 2 passport photographs - proof of enrollment Hasselt University - proof of scholarship or proof of guarantorship - copy of your rent contract or correct address 	“bewijs inschrijving vreemdelingenregister (BIVR)”* (registration foreigners register)



TIP: Non-EU-citizens who stay over 3 months need to ask for a written confirmation of their BIVR application if they like to open a bank account.

* After being registered at the local Town Hall, a police officer will drop by your residence to verify that you actually live there before you receive your BIVR. If you are not a home you will receive a letter inviting you to report to the police station of your district.

Changes/leaving Belgium

- Changing address: notify the Town Hall and adjust the address in your student file
- Leaving Belgium at the end of your studies/stay: notify the Town Hall
- Leaving Belgium in the middle of your studies/ stay: notify the Town Hall and the Student Secretariat Martien Machiels (martien.machiels@uhasselt.be)

Opening a bank account

- If you choose to open a bank account in Belgium you can do so at once.

Banks will require the following documents:

- a valid passport or identity card, proof of enrollment at Hasselt University,
- a copy of your rent contract

Extra documents for non-EU citizens staying over 3 months:

- written confirmation of BIVR application, proof of scholarship, visa



TIP: take a business card from the international office with you in case the bank has questions.

- A current account provides you with a cash card for 24-hour ATM's. This card can be equipped with the PROTON function, a rechargeable cashpoint card for small expenses.



TIP: register your cash card with proton function at the student secretariat in order to buy lunch in the Hasselt University restaurant at a reduced price.

- Addresses

Fortis, Grote Markt 6, Hasselt

KBC, Gouverneur Verwilghensingel 101, Hasselt

Dexia, Havermarkt 36, Hasselt

Fortis, Marktplein 18, Diepenbeek

KBC, Kapelstraat 36, Diepenbeek

Dexia, Dorpsstraat 24, Diepenbeek



2. Health insurance – Health care

Health insurance

Individual health insurance is compulsory in Belgium.

If you are from an EEA country you are insured through your own national health service by the European Health Insurance card (EHI). This card covers expenses in case of illness abroad, and is valid for a maximum of one year.

When you see a doctor or a specialist, you will be given a “certificate of services provided”. In some cases, the pharmacist provides you with a document for refund purposes (certificate model 704). Bring these certificates, together with your EHI-card to the mutuality office.

We recommend that you also take a travel insurance policy.

However, if you are from a non-EEA country, you are automatically enrolled into an all-inclusive insurance, called SIP. If you are staying longer than 6 months you are also subscribed to the health insurance fund CM (Christelijke Mutualiteit) and will receive a “SIS”-card.

When visiting a doctor, pharmacy or hospital always take your EHI or SIS-card with you.

More info on refunding: www.uhasselt.be/medical-refund



TIP: always keep all medical documents you receive for later repayment.

ADDRESSES OF THE HEALTH INSURANCE FUND CM:

Kerklaan 6 bus1, Diepenbeek

Fruitmarkt 18, Hasselt

Health care

- **Doctors:**

Dr. B. van den Bergh, Patersplein 3, Diepenbeek, 011 23 50 01

Dr. G. Lambrichts, Wijkstraat 11, Diepenbeek, 011 35 20 99

Dr. P. Decoutere, Willekensmolenstraat 135, Hasselt, 011 22 51 52

Dr. A. De Graaf, Thonissenlaan 35, Hasselt, 011 22 33 12

- **Hospitals:**

Campus Virga Jesse, Stadsomvaart 11, Hasselt, 011 30 81 11

Campus Salvator, Salvatorstraat 20, Hasselt, 011 28 91 11

- **Medical assistance at night and in the weekend:**

Doctor: one central number : 011 22 03 03

You can go for a consultation to the “Welzijnscampus” (A. Rodenbachstraat 29, Hasselt) or a doctor will come to your home.



TIP: Pharmacists can be recognized by a green cross; at night and during the weekend the name of the pharmacist on duty is advertised on the window of each pharmacy.

3. Accommodation

If you are looking for a student room, check out the available rooms on:

www.uhasselt.be/english/kamers/

FOR MORE INFO and help: marc.thoelen@uhasselt.be

4. University restaurant

Sandwiches, drinks, sweets, full lunches and dinners are available in our recently renovated restaurant and cafeteria. Hasselt University wishes to offer students healthy and cheap meals. Therefore it will subsidize your meal if you pay for it with a proton cash card that has been registered at the student secretariat. Your meal will cost you only 3.98 euro instead of 5.91 euro!

5. Library

As a registered student or guest you are allowed to use the library. More info:

www.uhasselt.be/uhassest-Library

6. Internet and e-mail

On enrolment students are automatically given a user-ID and a password.

On several places on the campus you can find “internet corners”. Here you can quickly read your mail or look something up on the internet.

You are also welcome to use the computers in the computer classes in the B, C, F or G-block. Copying software and using own software are strictly forbidden.

7. Student unions

International student unions

- AES, the association for exchange students
- AIESEC, an international organization of students interested in internships and business management

Faculty student unions

- JOSS – student and alumni of Statistics, with a lot of international members
- Hermes - students of the Faculty of Applied Economics
- Commeatus – students of Transportation Sciences
- Miezzerik – students of Faculty of Medicine
- Biomedica- students of Biomedical Sciences

- Filii Lamberti – students of Mathematics
- DIP's – students of Biology and Chemistry
- Themis – student of the Faculty of Law

Non-faculty student unions

- STURA, is short for “Studentenraad”, which translates as Student council. It is the official student body which represents all university students at Hasselt University and Transnational University Limburg. The core group is composed of 10 students who are democratically elected at the end of each academic year. They appoint the students who will have a seat in the advisory councils to the Board of Directors.
- SOS, is an acronym for “Students on Stage”. Talented or not, stage animal or over come with stage-fright, all people with an open mind, who have ideas for costumes and stage decorations or who simply want to have fun performing in small sketches, are welcome.
- CCG (Christian Campus Community) is committed to the deepening of the Christian religion.
- VLUG, Free-thinking Limburg University Community.
- INDERDAAD! represents the Holebi (Gay-Lesbian-Bisexual) students.



TIP: Are you a born actor? Share your talent and join SOS!



8. Travel

Documents required

For an EU citizen a national identity card is all you need to travel from one European Union country to another. No passport or visa is required.

Citizens of all non-EU countries must have a passport with the required appropriate visa.

The visa which allowed you to enter Belgium entitles you to travel through a part of Europe, namely the “Schengen Area”. Following countries are part of the Schengen Area:

Belgium, Denmark, Germany, Finland, France, Greece, Italy, Iceland, Luxemburg, The Netherlands, Norway, Austria, Portugal, Spain, Sweden, Estonia, Latvia, Lithuania, Malta, Hungary, Poland, Czech Republic, Slovakia, Slovenia and Switzerland.



The UK is not included in the list of countries of the Schengen Area! Be careful with Christmas shopping in London! You might get into the UK but won't be able to return to Belgium!



When traveling, always take your international passport and residence permit with you, even when visiting a city as nearby as Maastricht (The Netherlands).





Means of transportation

• **Railway**

The Belgian Railway offers various cut-price formulas to travel in Belgium and Europe. Here are some of the most commonly used. You can find more information on the website www.b-rail.be or at the railwaystation.

GO-PASS: if you are under 26 years of age, your go-pass entitles you and your friends (under 26) to 10 single trips in second class between two Belgian stations. The GO-PASS is valid for 1 year and costs 50 euro.

RAIL PASS: similar to GO-PASS, but without age limit and costs 74 euro.

• **Bus**

The name of the local bus company is “De Lijn”.

Bus line 36, 45 or 20a takes you from Hasselt Railway Station to Hasselt University in 15 minutes.

Bus line 36 and 20a takes you from Diepenbeek to Hasselt University in 6 to 12 minutes. More information on bus lines can be found on the website www.delijn.be

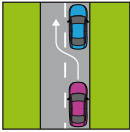
TIP: In case of any doubt concerning the destination, ask the bus driver.



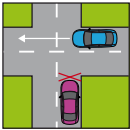
• **Bicycle**

Hasselt University provides the possibility to obtain a bike on campus from the “VEDO” shop for a deposit of 70 euro.

9. Traffic rules



Drive on the right, overtake on the left.



Priority is given to the right; drivers must stop for traffic joining from the right.



NO driving and drinking, also for bicyclists.



Use lights of your bicycle if riding after dark.



NO passengers on your bicycle carrier.

10. Phones

Public telephones

Coin-operated phones still exist. However, most public phones are equipped with a card function. You can use your proton card or a prepaid international phone card. Phone cards can be bought in bookshops and night shops at the price of 5 euro, entitling you to call anywhere between 150 and 300 minutes.

Mobile phones

If you wish to use a mobile phone in Belgium you have to know that there are three major competing networks

- Proximus: www.proximus.be
- Mobistar: www.mobistar.be
- Base: www.base.be

You can buy a local number and calling credits in many shops.



TIP: Proximus pay&go international is an ideal calling credit for European students as you can call or send messages to any chosen European country at the national rate.

11. Sports and cultural activities

Sports

In Hasselt and Diepenbeek several indoor and outdoor sports can be practiced. Our sports programme includes weekly activities such as badminton, basketball, dance and work-out courses, indoor football (futsal), ice hockey, martial arts such as eskrima and karate, rugby, table tennis and volleyball. All those sports are free of charge!

We organize courses in wall climbing, bowling, dance and squash at the price of 7.5 euro for a series of 5 lessons.

Several times a year we offer activities such as a mountainbike trip, an adventure day, gliding, skiing and snowboarding, windsurfing, wakeboarding and diving.

We also have good deals with some external sports partners:

- free swimming at the Hasselt indoor swimming pool
- ice-skating at 1 euro at the Hasselt skating hall
- wall climbing at 3 euro at Olympia Hasselt
- squash at 3 euro for ½ hour at Fitlink on campus
- a reduction at fitness and wellness center Health City on campus

Apart from these options you can find a wide range of sports facilities available in the surroundings of Hasselt: a golf club, a horse riding school, the biggest outdoor skate park in the Benelux, indoor and outdoor tennis courts, and an athletics track. For most of these facilities fees are charged. In some occasions the student ID card from UHasselt entitles you to a reduction, so be sure to ask!

MORE INFORMATION can be obtained at the sport office located at the Agora.

Website: www.studentensportlimburg.be/en/home on which you can enroll for most of the activities.



TIP: Chear for Hasselt University at the boat regatta! We won the cup six times.

Cultural activities

Expand your horizon, visit some Belgian historical towns!

BRUSSELS is the capital of Belgium and the administrative centre of the European Union. The vibrant atmosphere of Brussels is enhanced by picturesque medieval streets, lively squares, impressive monuments, interesting restaurants and an active cultural life. Very famous are the Grote Markt (Market Place), the Atomium, not to forget the Manneken Pis statue.

ANTWERP, daughter of the River Scheldt, is the second largest city of Belgium. It is a splendid city with numerous architectural highlights, most of which date from the 16th and the 17th century. Antwerp is also known as the diamond centre of the World. If diamonds really are a girl's best friend, then most of the ladies among you will not leave out a visit to the diamond district around the Railway Station.

BRUGES is called: 'the Venice of the North'. This splendid medieval city is one of Belgium's crown jewels. In no other European city are the feel and the look of medieval times so present as here in this city close to the North Sea. Bruges is unique, in the sense that the town authorities have done the utmost to preserve the medieval-looking image of the city.

GHENT is the fourth largest city of Belgium with about 250.000 inhabitants. It is not as big as Antwerp but bigger than Bruges. It is also less famous among tourists than the often praised Bruges. However, for some people Ghent is the real diamond of Flanders and Belgium. In a unique way, Ghent has managed to preserve its medieval power while keeping up with modern times.





Hasselt University offers a varied programme of cultural activities for all foreign students.

TIMING	ACTIVITY	LOCATION	ORGANISATION
Week 19-23/09	Orientation programme	Campus	MOBO
Thursday 29/09	AES goes Schaap	Kaffee 'T Schaap Hasselt	AES
Monday 03/10	Orientation day MStat	Campus	MOBO+JOSS
Monday 03/10	Sportactivity	Hasselt	AES
Tuesday 04/10	Pub crawl		
Wednesday 12/10	Introcantus	Villicus	AE
Monday 24/10	Jeneverdropping	Diepenbeek	
Week 31/10-04/11	Fuif	Villicus	AES + Miezerik
November	Ice-skating	Hasselt	JOSS
12-13/11	Amsterdam Weekend		AES
Thursday 01/12	"Proud to be fout" party	Villicus	AES
Saturday 19/11	Citytrip	Brussel	Prof. De Groote
6 or 7/12	"Sinterklaas"cantus	Villicus	AES
Saturday 10/12	City trip	Maastricht	Prof. De Groote + AIESEC
Week 13 or 14	AES@the movies	Kinopolis Hasselt	AES
Monday 13/02	Orientation Day	Campus	MOBO
Saturday 18/02	City trip	Antwerpen	JOSS + DIOS
Wednesday 14/03	Worldevening	Campus	MOBO
Saturday 17/03	City trip	Gent	AES + DIOS

For updates for 2nd semester, check: www.uhasselt.be/Cultural-activities



13. Useful addresses

- **Police**

Local Police HAZODI (Hasselt - Zonhoven - Diepenbeek)
Thonissenlaan 15, Hasselt
emergency calls: 011- 26 26 66
other calls: 011- 22 29 82

- **Fire department**

Hasselt: tel: 011/22 20 22 or 011/22 49 26
emergencies: tel: 112 (you will be connected to emergency dispatching).

- **Laundry**

Davini	Nieuwstraat 167	Diepenbeek
Prima Pressing	Wijkstraat 13	Diepenbeek
Prima Pressing	Diesterstraat 22	Hasselt
't Witwassertje	Sint-Katarinaplein 21	Hasselt

- **Copy Services in Hasselt**

Druk en copy Service	Bampslaan 10	Hasselt
----------------------	--------------	---------

- **Groceries**

GB	Wijkstraat 37	Diepenbeek
Carrefour	Herkenrodesingel 2	Hasselt
Delhaize	Luikersteenweg 109	Hasselt
Ming Wah Supermarkt	Capucienenstraat 1	Hasselt

- **Places of worship**

- **Catholic churches:**

- DIEPENBEEK:**

- Every first Sunday of the month there is an English service at Zusters Ursulinen, Wijkstraat 16, Diepenbeek

- Sint-Servaaskerk: Marktplein

- HASSELT:**

- Cathedral: Vismarkt w/n

- Church Godsheide: Kieselstraat w/n

- Church Sint-Katarinawijk: Sint-Katarinaplein w/n

- **Protestant churches**

- HASSELT:**

- United Protestant Church: Kuringersteenweg 81

- **Evangelical churches**

- HASSELT:**

- Evangelical Community "De Zaaier": Runkstersteenweg 303

- DIEPENBEEK:**

- Evangelical Community Diepenbeek: Kempenstraat 70

- **Orthodox churches**

- GENK:**

- Greek Orthodox Church:

- G.A. Galopinstraat 21

- Oekraïen Orthodox Church:

- Hulshagenstraat w/n

- **Mosques**

- HASSELT:**

- Badr Mosque: Mouterijstraat w/n

- **Jewish synagogues**

- ANTWERP:**

- Synagogue Shomré Hadass:

- Bouwmeesterstraat 7

- BRUSSEL:**

- The Great Synagogue:

- Regentschapsstraat

- **Buddhist stupa**

- SCHOTEN:**

- Buddhist Stupa: Kruispadstraat 33

MORE INFORMATION can be obtained from our campus pastor : e-mail: karin.daniels:@uhasselt.be

- **Embassies**

A list of foreign embassies in Belgium can be found at the following address: diplomatie.belgium.be/en/addresses/belgium/default.asp

14. Useful translations

ENGLISH - DUTCH

HEALTH

General practitioner, *Geneesheer / arts*

Pharmacist, *Apotheker*

Dentist, *Tandarts*

Physiotherapist, *Kinesist*

Insurance, *Verzekering*

NUMBERS

one, *één*

two, *twee*

three, *drie*

four, *vier*

five, *vijf*

six, *zes*

seven, *zeven*

eight, *acht*

nine, *negen*

ten, *tien*

AVAILABILITY

Open, *Open*

Closed, *Gesloten*

Before noon / morning (am), *Voormiddag (vm)*

Afternoon (pm), *Namiddag (nm)*

Holiday, *Jaarlijks verlof*



ACCOMMODATION

For rent, *Te huur*

For sale, *Te koop*

FOOD, BEVERAGES AND OTHER NECESSITIES

Beer, *Bier*

Bread, *Brood*

Milk, *Melk*

Coffee, *Koffie*

Cheese, *Kaas*

Ham, *Hesp*

Eggs, *Eieren*

Washing powder/detergent, *Waspoeder*

Blanket, *Deken*

Pillow, *Kussen*

Sheet, *Laken*

Mattress cover, *Matrasbeschermer*

Duvet, *Dekbed*

Towel, *Handdoek*

Kitchen towel, *Keukenhanddoek*

DAYS OF THE WEEK

Monday (Mon.), *Maandag (Ma)*

Tuesday (Tue.), *Dinsdag (Di)*

Wednesday (We.), *Woensdag (Wo)*

Thursday (Thu.), *Donderdag (Do)*

Friday (Fri.), *Vrijdag (Vr)*

Saturday (Sat.), *Zaterdag (Za)*

Sunday (Sun.), *Zondag (Zo)*

GENERAL EXPRESSIONS

How much does this cost? *Hoeveel kost dit?*

Where is the bus stop? *Waar is de bushalte?*

What do you call this? *Hoe heet dit?*

Where can I find a doctor?

Waar vind ik een dokter?

Thank you, *Dank u / Bedankt*

Here you are, *Alstublieft*

Hello, *Goedendag*

See you/goodbye, *Tot ziens*





UNIVERSITEIT HASSELT | Campus Diepenbeek | Agoralaan Gebouw D | 3590 Diepenbeek | www.uhasselt.be/toekomstige-studenten

