

2021-2022

# Welcome Guide



**UHASSELT**

KNOWLEDGE IN ACTION



**2021 - 2022**

WELCOME GUIDE  
HASSELT UNIVERSITY FOR  
INTERNATIONAL STUDENTS



## **Welcome 4**

### **Hasselt, Diepenbeek and Belgium in a nutshell 6**

1. Language 7
2. Climate 7
3. Hasselt 7
4. Integration programme 8
5. Emergencies: what to do 8

### **Hasselt University 9**

1. Introduction 9
2. Departmental coordinators 11
3. University restaurant 13
4. Library 14
5. Internet and E-mail 14
6. Map of the campus 15

### **StudentPoint: Study coaching and support 16**

1. StudentPoint 12
2. Student psychologists 13
3. Study coaches 12
4. Disability officer 12
5. Academic advisors 12

## **How to study 16**

1. Finding information
2. Educational methods and learning
3. Necessary skills
4. Evaluation

## **Practical information 16**

1. Administrative formalities 16
2. Taxes 18
3. Health insurance and health care 20
4. Accommodation 22
5. Mobile phones 22
6. Opening a bank account 23
7. Language courses 24
8. Travel 24
9. Traffic rules 27
10. Student jobs 28

## **Leisure 29**

1. International Council 29
2. Buddy programme 29
3. Student Unions 31
4. Sports 32
5. Cultural activities 34

## **Addendum 36**

1. Useful addresses 36
2. Useful translations 39

# Welcome to Hasselt University

Dear international student, researcher, visitor,

We are very much looking forward to welcoming you at Hasselt University.

Hasselt University is a young and dynamic institution, located in a green environment at a junction of a lot of European cultures. Germany and the French speaking part of Belgium are all nearby. Hasselt itself is a cosmopolitan town with lots of exciting opportunities. It is only up to you to seize them!

This guidebook helps you find your way at Hasselt University and in Belgium in general. It includes practical information and provides answers to questions about accommodation, public transport, how to study and administrative steps. We hope that you will soon feel completely at home.

Throughout your visit, our team will be available to help you so that your stay at our university is as successful as possible, both from an academic and a personal point of view.

Good luck and enjoy your stay!

The International Office

Tel: +32 11 26 81 76

[www.uhasselt.be/internationaloffice](http://www.uhasselt.be/internationaloffice)  
[www.facebook.com/hasseltuniversity](https://www.facebook.com/hasseltuniversity)



## USEFUL CONTACTS AT OUR UNIVERSITY



### **ADMISSION AND ADMINISTRATION INTERNATIONAL STUDENTS**

Leen Jorissen

[leen.jorissen@uhasselt.be](mailto:leen.jorissen@uhasselt.be)



### **ADMISSION AND ADMINISTRATION EXCHANGE STUDENTS**

*(E.G. ERASMUS)*

Erika Vandersmissen

[erika.vandersmissen@uhasselt.be](mailto:erika.vandersmissen@uhasselt.be)

### **SUPPORT INTERNATIONAL STUDENTS AND STAFF**

*(E.G. ACCOMMODATION,  
VISA, INSURANCE)*

Stefanie Commenee

[stefanie.commenee@uhasselt.be](mailto:stefanie.commenee@uhasselt.be)



### **SUPPORT INTERNATIONAL STUDENTS AND STAFF**

*(E.G. ACCOMMODATION,  
VISA, INSURANCE)*

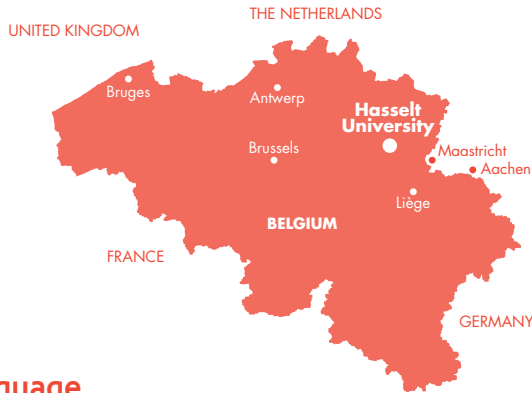
Niels Lambrichts

[niels.lambrichts@uhasselt.be](mailto:niels.lambrichts@uhasselt.be)

# Hasselt, Diepenbeek and Hasselt University



# in a Nutshell



**TIP:** Waterproof clothing is useful at any time of the year

## Hasselt

When you say the word Hasselt, local people immediately think of “jenever” (the juniper-flavored national and traditional liquor of Belgium and the Netherlands) and “speculaas” (a typical spiced almond biscuit). Over the past years Hasselt has grown into a hip and trendy city. Hasselt is the ideal city for those who love shopping, culinary treats and a dash of culture. In the modern cinema complex Kinopolis with 13 auditoriums, you can enjoy the latest films in ideal circumstances. For theatre, literature, contemporary dance and classical music you can visit the cultural centre of Hasselt. The Japanese garden and the nature domain Kiewit are a real treat for nature lovers. With about 77000 inhabitants, Hasselt is a city filled with charm and opportunity.

More information: [visithasselt.be/en](http://visithasselt.be/en)

## Emergencies: what to do

If you have an emergency and you need the police, you call 101. When you need some information or the assistance of the police and it is not an emergency, you need to call the number of the police department of your region. For Hasselt and Diepenbeek it is this number +32 11 22 29 82.

**112** is the European international emergency number. If you need help in Belgium or Europe (fire department, ambulance, emergency doctor,...), you can call **112**.

## Language

The three official languages of Belgium are Dutch, French and German. Hasselt and Diepenbeek are located in the Dutch speaking part of the country. Belgians are proud of their language skills. Three quarters of the population speaks at least two languages. Handy, if you are coming to Belgium to study or work!

## Climate

Belgium has a temperate climate characterized by moderate winters and pleasant summers. The climate is probably not the reason why you chose to study in Hasselt, since the weather is often unpredictable. Visitors can expect a downpour any time of the year. Snow is possible, but not frequent in winter.

## Introduction

Hasselt University is situated in the heart of Europe, within a stone's throw of cities such as Brussels, Liège (French speaking part of Belgium), Aachen (Germany) and Maastricht (the Netherlands), while Paris and London are within a couple of hundred kilometres. There are two campuses: a campus in a green environment outside the city of Hasselt (Diepenbeek campus) and a campus right in the centre (Hasselt campus).

Hasselt University is an innovative university with a strong international orientation. Founded in 1971, it is the youngest university in Belgium. Hasselt University stands for its excellence in education, top research in leading fields and active commitment in innovation and entrepreneurship. The overall objective is to combine academic excellence with economic and social relevance. Hasselt University is ranked amongst the best institutions worldwide in U-Multirank 2019 (an online tool designed with seed funding of the European Commission).

Furthermore, Hasselt University is ranked in the top 500 of the Times Higher Education World University Ranking, as well as 65th in the Times Higher Education Ranking of universities less than half a century old.

Approximately 6.395 students and 1296 staff members are connected to Hasselt University. Hasselt University offers attractive undergraduate, graduate and PhD programmes in its 7 faculties (Faculty of Business Economics, Faculty of Sciences, Faculty of Medicine and Life Sciences, Faculty of Law, Faculty of Architecture and Arts, Faculty of Engineering Technology, Faculty of Rehabilitation Sciences) and its School of Transportation Sciences and School for Educational Studies.





## Departmental coordinators

(exclusively for exchange students)

If you have questions concerning your choice of subjects, exam schedules or other academic matters, please contact the following people:

### *Faculty of Business Economics:*

lotte.boosten@uhasselt.be

### *Faculty of Sciences:*

ann.cuyper@uhasselt.be (Biology)

dirk.vanderzande@uhasselt.be (Chemistry)

roel.braekers@uhasselt.be (Statistics and Mathematics)

fabian.difiore@uhasselt.be (Computer Sciences)

peter.vandoren@uhasselt.be (administrative)

### *Faculty of Medicine & Life Sciences*

niels.hellings@uhasselt.be

ilse.broekx@uhasselt.be

### *Faculty of Rehabilitation Sciences*

emma.boelen@uhasselt.be

### *Faculty of Law:*

ingrid.vrancken@uhasselt.be

### *Faculty of Architecture and Arts:*

els.hannes@uhasselt.be (architecture)

katelijn.quartier@uhasselt.be (interior design)

### *Faculty of Engineering Technology:*

karine.evers@uhasselt.be

### *School of Transportation Sciences:*

nadine.smeyers@uhasselt.be



## University restaurant

Sandwiches, drinks, sweets, full lunches and dinners are available in the university restaurants in Diepenbeek and Hasselt. Hasselt University wishes to offer students healthy and cheap meals, therefore your meal will be subsidized if you pay for it with your student/staff/visitor card.

When you register your student/staff/visitor card on the "ping ping web-site" ([www.uhasselt.be/en-pingping](http://www.uhasselt.be/en-pingping)), you can use the photocopiers and buy lunch at Hasselt University restaurants at a reduced price.

## Library

As a registered student or visitor you are allowed to use the UHasselt library. More info: [www.uhasselt.be/uuhasselt-library](http://www.uhasselt.be/uuhasselt-library).

## Internet and e-mail

Upon enrolment students are automatically given a user-ID and a password. You also need those credentials to login to Blackboard, the digital learning environment that is used by Hasselt University (direct access: <https://bb.uhasselt.be>).

In several places on the campuses you can find "internet corners". Here you can quickly check your mail or search something on the internet. Furthermore, PC-rooms are available which can be used for individual study or group projects. Copying software and using your own software is strictly forbidden.

More detailed information can be found on our website: [www.uhasselt.be/help-studenten-en](http://www.uhasselt.be/help-studenten-en)

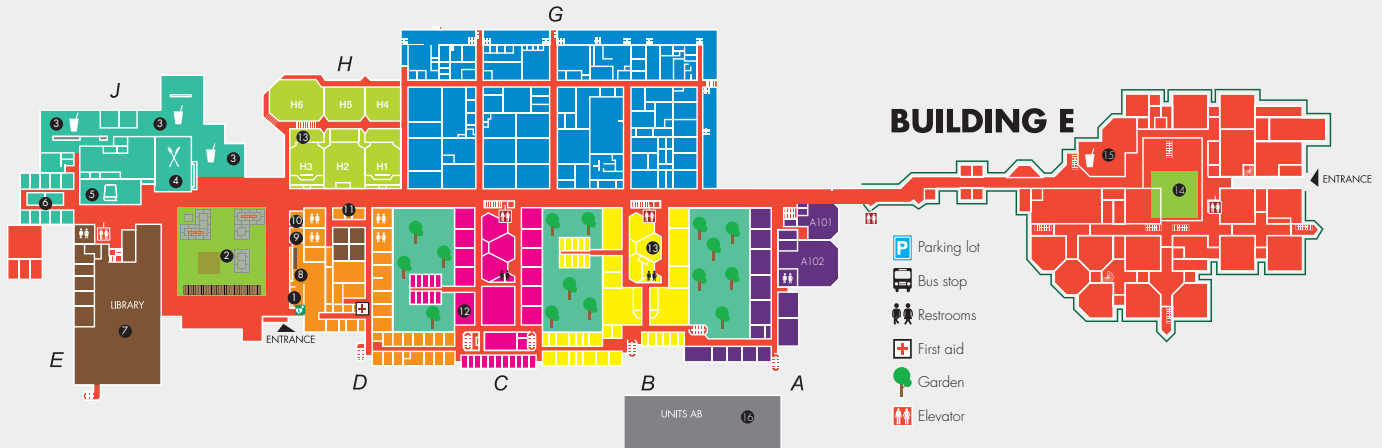
## Plan of Diepenbeek Campus

- 1 Main Reception Desk
- 2 Agora
- 3 Cafeteria
- 4 Restaurant
- 5 Book shop
- 6 Student associations and STURA
- 7 Library
- 8 Student's Office

- 9 Studenten Sport Limburg
- 10 Campus police
- 11 ATM - PingPing
- 12 Help desk
- 13 Logistical Support
- 14 Faculty of Architecture and Arts
- 15 Cafeteria Architecture and Arts Faculty
- 16 Units AB

### BUILDING D (MAIN BUILDING)

### BUILDING E



# StudentPoint: Study coaching and support



## StudentPoint

During your studies at Hasselt University you get the necessary support as a student. Do you have a question and you do not immediately know who to contact?

You can visit the StudentPoint every working day. Our student counselors are present from 10 a.m. to 2 p.m. From 2 p.m. to 5 p.m. (Monday - Thursday) a fellow student will help you (on Monday and Wednesday an international student).

[studentpoint@uhasselt.be](mailto:studentpoint@uhasselt.be)

011 26 81 19

Building D - Agora

## Student psychologists

You can turn to the student psychologist for support and assistance with all sorts of personal, relational, family and other problems. The psychologist can, if needed, also refer you to more specialized help.

[Philip Swerts](#) | [Majken Klomp](#) | [Tine Versleegers](#) | [Marthe Vandyck](#)

[studentenpsycholoog@uhasselt.be](mailto:studentenpsycholoog@uhasselt.be)

## Study Coaches

Do you have questions or doubts about your study method or planning? Do you experience stress, procrastination, lack of concentration or fear of failure? If so, you can contact the study coach for your programme.

Faculty	Study Coach
Faculty of Business economics	Melanie Hoeyberghs <a href="mailto:melanie.hoeyberghs@uhasselt.be">melanie.hoeyberghs@uhasselt.be</a>
Faculty of Medicine and Life Sciences Faculty of Rehabilitation Sciences	Özlem Yalçı <a href="mailto:ozlem.yalci@uhasselt.be">ozlem.yalci@uhasselt.be</a>
Faculty of Law Faculty Sciences	Veerle Smeers <a href="mailto:veerle.smeers@uhasselt.be">veerle.smeers@uhasselt.be</a>
Faculty of Arts and Architecture Faculty of Engineering Technology School of Transportation Science	Julie Caubergh <a href="mailto:julie.caubergh@uhasselt.be">julie.caubergh@uhasselt.be</a>



## Disability officer

Students with dyslexia, AD(H)D, ASD or chronic health conditions can request extra support and facilities for their teaching and evaluation through the disability officer.

Els Swijns

[faciliteiten@uhasselt.be](mailto:faciliteiten@uhasselt.be)



## Academic advisors (English master programmes)

Do you have questions about the programme, curriculum, examination regulations, exam results or your progress in studies? Or about the design of your study programme, or the possibility of modifying it? Do you wish to apply for one or more exemption(s)? Your programme's study career coach will be happy to help you.

### *Faculty of Business Economics*

[heleen.vliex@uhasselt.be](mailto:heleen.vliex@uhasselt.be) (master of management)

[annelies.clijsters@uhasselt.be](mailto:annelies.clijsters@uhasselt.be) (business administration)

[lieve.bynens@uhasselt.be](mailto:lieve.bynens@uhasselt.be) (business economics/business engineering)

### *Faculty of Sciences:*

[michiël.vandenbempt@uhasselt.be](mailto:michiël.vandenbempt@uhasselt.be) (Master of Statistics and data science)

### *Faculty of Medicine & Life Sciences*

[heleen.vliex@uhasselt.be](mailto:heleen.vliex@uhasselt.be)

### *Faculty of Rehabilitation Sciences*

[annelies.clijsters@uhasselt.be](mailto:annelies.clijsters@uhasselt.be)

[martine.luwel@uhasselt.be](mailto:martine.luwel@uhasselt.be)

### *Faculty of Law:*

[an.byloos@uhasselt.be](mailto:an.byloos@uhasselt.be)

### *Faculty of Architecture and Arts:*

[eva.bollen@uhasselt.be](mailto:eva.bollen@uhasselt.be)

### *Faculty of Engineering Technology:*

[kathleen.bovin@uhasselt.be](mailto:kathleen.bovin@uhasselt.be)

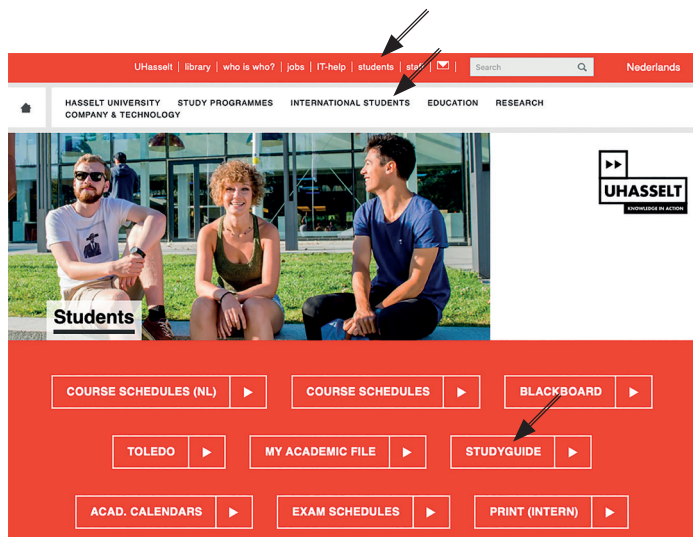
### *School of Transportation Sciences:*

[tine.huygh@uhasselt.be](mailto:tine.huygh@uhasselt.be)

# How to study

## Finding information

It all starts with the right information. A lot of useful information can be found on our website [www.uhasselt.be/en](http://www.uhasselt.be/en). Check it out!



If you are looking for information about your courses, schedules, etc. click on 'students' in the top red beam.

In the electronic **study guide**, you will find all the information about your programme and courses. For each course, you can check the ECTS-study points, the teaching period, teaching methods, contact persons, a brief description of the content, the learning outcomes, coursemate rial, evaluation methods.

Study programme

Course units	Language	SBU	SP	P1 SBU	P1 SP	P2 SBU	P2 SP	academic calendar	BB
3808 Business modelling	E	V 81	3	81	3				
3857 Leadership and Human Capital	E	V 162	6	162	6				
3809 Applications in business modelling	E	V 81	3			81	3		
1717 Intercultural Business Communication French	N	E 81	3			81	3		
Specialization IMS	Language	SBU	SP	P1 SBU	P1 SP	P2 SBU	P2 SP	academische kalender	BB
2878 Strategic marketing	E	V 81	3	81	3				
2879 Marktstrat simulation game	E	V 81	3	81	3				
2143 Business strategy	E	V 162	6	162	6				
2144 Marketing Research Methodology	E	V 162	6	162	6				
2142 International marketing	E	V 162	6			162	6		
1696 Strategic innovation	E	V 162	6			162	6		
1839 Master's dissertation master of management	E	V 486	18			486	18		
Specialization BPM	Language	SBU	SP	P1 SBU	P1 SP	P2 SBU	P2 SP	academische kalender	BB
1729 ERP-systems	E	V 162	6	162	6				
3523 Cost-benefit analysis	E	V 162	6	162	6				
1732 IT-governance, risk and compliance	E	V 162	6			162	6		
3533 Business process modelling	E	V 324	12	162		162	12		
1839 Master's dissertation master of management	E	V 486	18			486	18		

Example study guide of 'Master of Management'. You can click on the name of the course for more info.

By clicking on '**international students**' you will find out everything about accommodation, life on campus, coaching and support, regulations and administration, and much more.

The academic calendar of each program contains the dates of teaching and examination periods, deadlines for deregistration for course units, days off, holidays, ...

In your **course schedule**, you can find when and where you have classes. Since course schedules aren't fixed, it's wise to check your course schedule daily and weekly for alterations.

Master TEW, HI, BI en HW en Master of Management		
semester 0	Uiterste uitschrijfdatum jaaropleidingsonderdeel	21/09/2020 - 15/12/2020
	Academiejaar (begin-einde)	21/09/2020 - 19/09/2021
	Allerzielen (vrije dag)	2/11/2020 - 2/11/2020
	Wapenstilstand (vrije dag)	11/11/2020 - 11/11/2020
	Collectieve sluiting Kerstmis	24/12/2020 - 3/01/2021
	Collectieve sluiting Pasen	4/04/2021 - 5/04/2021
	Feest van de arbeid (vrije dag)	1/05/2021 - 1/05/2021
	Collectieve sluiting O.L.H. Hemelvaart	13/05/2021 - 16/05/2021
	Pinkstermaandag (vrije dag)	24/05/2021 - 24/05/2021
	Vlaamse feestdag	11/07/2021 - 11/07/2021
	Nationale feestdag	21/07/2021 - 21/07/2021
	O.L.V. Hemelvaart	15/08/2021 - 15/08/2021
semester P1	Uitschrijfperiode opleidingsonderdeel	21/09/2020 - 9/11/2020
	Onderwijsperiode	21/09/2020 - 18/12/2020
	Kerstvakantie	21/12/2020 - 3/01/2021
	Examenperiode	4/01/2021 - 5/02/2021
	Intersemestriële lesvrije week	8/02/2021 - 14/02/2021
	Bekendmaking examenresultaten	17/02/2021 - 17/02/2021
	Inzagementen exams	18/02/2021 - 24/02/2021

Example academic calendar 1st year of Master of Statistics.

Example timetable 1st year of Master of Transportation Sciences.

**Blackboard** is the virtual learning environment where you find the necessary information about each of your courses:

- Announcements (e.g. about guest lectures, changes in the course schedule, ...)
- Course information and contact details of staff members
- Course material: PowerPoint lectures, extra study material, video's, information about the exam

How to use Blackboard?

- Go to [www.uhasselt.be/intranet-students](http://www.uhasselt.be/intranet-students): Click on 'Blackboard' or go to [bb.uhasselt.be](http://bb.uhasselt.be)
- Login with your user-id and password
- You will see an overview of the courses you are registered in, and for each course the announcements, lecture slides, extra reading material, ...

**TIP!**

Check blackboard at least the day before each lecture, so you can prepare properly (e.g. reading assignments, download or print the lecture slides, ...).

'**My academic file**' is the place where you can find your personal information, download forms and check your exam results.

## Educational methods and learning

Education@U Hasselt consists of 2 key components:

- Contact moments
- Autonomous learning

Both will be discussed below

### Contact moments

When you study at Hasselt University, you can expect to be taught in various ways. Most programmes combine lectures and practical sessions, both on-campus and online.







During a **lecture**, a professor teaches in front of a (large) group. Depending on the group size and the setting, there can be (a lot of) interaction between the professor and the students. Don't be afraid to ask questions! Since the professor might teach subject matter that is not in the PowerPoint or the textbook, it's important to take notes.

Scan the QR-code for extra guidelines on note-taking, or make an appointment with your study coach!



**Practical sessions**, also known as 'work meetings', 'practica' etc., are primarily organised in smaller groups. You might have to prepare for it at home. During a practical session, you will learn how to apply and discuss your course material. The setting is informal and the professor expects active cooperation. You will look for solutions for given problems or exercises (with your fellow students), and group discussions might occur. Students are encouraged to ask questions.

Although it is not always mandatory, it is helpful to attend all your lectures and practical sessions

## Autonomous learning

But of course, there's more than attending lectures and practical sessions. Hasselt University has a unique approach to learning. This method helps students gain knowledge, skills, and insight to make them critical and versatile graduates who can adapt to an ever-changing world. You can study more or less autonomously, guided by study instructions from the professors. You will find your assistant, as well as your other lecturers, to be very accessible. You can ask them for more explanation after class or via email (depending on their preference).

Some examples of what to do when studying autonomously:

### Read textbooks

For some courses, the course material will only exist out of powerpoints and your class notes.

However, for most courses, you will have to study a textbook, articles or a reader. The professor might not teach all the content you need to know for your exam in the lectures, so read your book carefully. It might take some time, so make sure you read the necessary chapters each week and don't get behind.

### TIP!

To study the textbook efficiently: structure it.

There are different ways to do so: you can underline/highlight the text, schematize, make an excessive table of content. It is best to combine these strategies to make sure you fully understand the material. For more information about how to study for your exams, check "d. Evaluation".



### More info?

Mindmapping:



Efficient reading:



Mark you text:



## Prepare for practical sessions

If you have a practical session coming up, you will have to prepare for it. Check your blackboard a few days in advance, so you know what to expect. Sometimes, you will need to prepare exercises; other times, you will have a reading assignment. Write down your questions so that you can ask your fellow students or tutor.

After your practical session, you can revise what you learned. You can do so by repeating the exercises, structuring your reading assignment etc.

Read more on:



Please also check "Evaluation and feedback" to get an overview of what to expect.

## Necessary skills

### Time-management

The average amount of time you spend studying, writing essays, taking classes etc., should be around 45 hours/week if you take a full-time programme of 60 study points. So even if you don't have any classes scheduled, you still need to spend a lot of time studying autonomously. At Hasselt University, there is a certain amount of time between your lectures for independent learning, individually or in a group setting. As a student, you need to manage your learning process independently. Therefore, it is important to manage your time effectively.

### TIP!

Make an overview of your courses, tasks, deadlines etc. e.g. in google calendar or use a hard-copy calendar. This way gives you a useful weekly overview of time and tasks and helps you to focus on your priorities.

More info?



### Critical thinking

Critically thinking is an essential skill at university.

You can study the new information you gathered from your classes, textbooks, assignments and practical sessions, etc. But you need to reflect critically on what you are learning.

Critical thinking is important because it allows you to make logical conclusions. When you genuinely want to learn something, understand the material, and understand such material, alternative solutions and problem-solving are a must.

This means you need to analyze the information (sources, data etc.) objectively and make a reasoned judgement or find a solution to a problem. Don't assume every academic judgement is correct, but evaluate how strong or valid it is. Recognize possible weaknesses and notice the implications behind a statement or argument.

## Academic writing

Academic writing is an important part of your study at Hasselt University since you have to write academic papers for some of your courses, not to mention your master's thesis!

### TIPS!

- Writing a paper takes time, so don't postpone it until the last week before the deadline. As you have read before: careful planning is essential.
- Make sure you know the exact objectives and evaluation criteria. Reread the assignment before you start.
- You will need to gather information by checking the university library online, reading articles etc. Go through the information, select the main ideas, create links between articles and create new ideas.
- Keep in mind that you can't copy-paste the work of other authors. If you do so, even accidentally, you plagiarize. In that case, the exam commission will decide on your penalty, ranging from getting an adjusted grade to being excluded from the resit. What you can do, is rephrase or synthesize the author's ideas and use references.
- And remember: It is important to think critically about everything you read.

More info?



## Teamwork

For some courses, you have to complete a group assignment, which means you will need to work constructively with others towards a common goal. Your grade can be based on the product but also (partly) on the process (e.g. by peer assessment).

### TIPS!

- Make sure everyone understands the assignment ahead and make a detailed plan on how to complete the task.





- Get to know your group members: what are their strengths?
- Divide the different tasks among the group members to save time.
- Set short-term deadlines and evaluate the individual work regularly and in the group. Don't be afraid to adjust the plan if needed!
- Turn to your lecturer if you are having difficulties in your group.

### Presentation

In some programs, you will need to give a presentation of a group or individual assignment.



### TIPS!

- Ensure you understand what you can expect: check Blackboard, the study guide, ask your professor or fellow students.
- Check the evaluation criteria (e.g. content, presentation skills, ...).
- Conduct research on your topic. Make sure you know what you are talking about.
- Decide on the format (e.g. How much time do you have to present? Do you want to use media?).
- Stick to the main idea and build up your presentation logically
- Rehearse. Have at least one test run in the mirror or with your family, friends or fellow students.
- Provide time to ask questions.

### More info?



### Exam skills

It will not be the first time you will have to prepare for and take exams. You know how it's done! But you might need to adapt your exam skills slightly to the Hasselt University way of taking exams. Check out how you can beat your exams in "d. Evaluation".

## Evaluation

All programs evaluate their students in various ways.

Of course, there are classic exams, but you can get assessments throughout the year. You can earn points on your academic writing, group assignments, presentations (as explained in “c. Necessary skills”), exams,...

The lecturers will evaluate you on your academic skills and your professional skills, e.g. presentation skills.

Before and after each evaluation, there is an opportunity to get feedback from your lecturers. You can ask for this feedback to know what you can do better next time.

## Exams

### What to expect?

Check the type of evaluation and examination per course in the study guide. There are different types of exams on campus or online:

- **Written exam:** you have to write down your response (comprehensively).
- **Oral exam:** you have to explain your answers to the professor. You might get some time to prepare your answers on paper.
- **Open book:** you can bring your course material to the exam. The professor will explain what you are allowed to bring with you and whatnot. Ensure your material is well-structured, and don't expect to pass the exam by literally copying information from the textbook (e.g. you might be asked to answer a case question by integrating different chapters of the course).
- **Closed book:** you will need to rely on your memory and understanding of the course material since you can't bring anything with you.
- **Closed-ended questions:**
  - Questions you can answer with “yes” or “no” or “true” or “false”. You might have to explain your answer.

- Multiple choice questions: you have to find the correct answer between different options. Take note: sometimes there is a correction for guessing, which means you will lose points if you choose the wrong answer, read the instructions on the exam carefully!
- **Open-ended questions:** Questions that need a longer answer. You need to write well-structured answers that contain sentences, lists etc., to give new and deeper insights...
- **Exercises:** you need to find a solution to new exercises, case studies, ...
- **How to prepare?**
  - Four weeks before the start of the examination period, you can check the day, time and place of your exams at [www.uhasselt.be/exam-schedule](http://www.uhasselt.be/exam-schedule).
  - Make a plan: how many days do you need to study for each exam? (also check: ‘Manage your time’)
  - Study all the course materials (powerpoints, notes, textbook, exercises etc.)!
  - It is not enough to study everything by heart. You will need to gain insight into the course material by:
    - » understanding everything
    - » explaining the subject matter in your own words
    - » applying the content to different contexts
    - » knowing the solution strategies of the exercises you practised and repeated, you tested yourself

More info on how to study effectively?  
Scan the QR-code!



## Results

A few weeks after you finished your exams, you will find your results online in 'my academic file'.

Every university has its evaluation criteria. At Hasselt University:

- 10/20 or more: you pass your exam.
- Between 10/20 and 14/20 means you did well.
- Less than 10/20: you don't pass, but you get a second chance (resit) in August for most courses.

Degree of distinction:

- A weighted percentage of 68 % onwards: you get a distinction. It means you distinguish yourself from other students.
- A weighted percentage of 77% onwards: you graduate with a great distinction
- A weighted percentage of 85% onwards: you get the greatest distinction. Be aware that getting a (great) honour is somewhat rare at Hasselt University.

You can find more information in the Education, Examination and Legal Position Regulations for students ([EEL regulations](#)).

After you got your results, it might be good to check your examination form and ask your professor for feedback. Some professors organise a moment for all students, and others expect the student to email to schedule a time.



# Practical information

**TIP:** Non-EU citizens who stay more than 3 months need to request written confirmation of their BIVR application if they want to open a bank account.

## Administrative formalities

### Registration at Hasselt University

You are required to register as a (exchange) student or visitor at the Student Administration (Martelarenlaan 42, 3500 Hasselt) in order to get your student/staff/visitor card. This card allows you to make use of the UHasselt facilities and infrastructure such as the library, bike rent, university restaurants, etc.

For more information, please contact the Student Administration:  
[studentensecretariaat@uhasselt.be](mailto:studentensecretariaat@uhasselt.be)

### REGISTRATION AT THE TOWN HALL

On arrival in Belgium all foreigners staying longer than one month must register at their local town hall **within eight working days**.

	DIEPENBEEK, DORPSTRAAT 11		HASSELT, LIMBURGPLEIN 1	
	AM	PM	AM	PM
Monday	09.00-12.30		09.00-12.30	12.30-17.00*
Tuesday	09.00-12.30	14.00-19.00*	09.00-12.30	12.30-20.00*
Wednesday	09.00-12.30	14.00-16.30*	09.00-12.30	12.30-17.00*
Thursday	09.00-12.30		09.00-12.30	12.30-17.00*
Friday	09.00-12.30		09.00-12.30	

*\*Every weekday from 9.00 am – 12.30 pm you can enter the Town Hall of Hasselt and Diepenbeek without an appointment...During the opening hours indicated in the afternoon, you can only visit the Town Hall if you have an appointment.*





	DOCUMENTS REQUIRED	DOCUMENTS TO RECEIVE
<b>EU-citizen</b> < 3 months	<ul style="list-style-type: none"> <li>• passport or identity card</li> <li>• proof of enrolment Hasselt University</li> <li>• copy of your rental contract or correct address</li> </ul>	"melding van aanwezigheid" (announcement of presence)
<b>EU-citizen</b> > 3 months	<ul style="list-style-type: none"> <li>• passport or identity card</li> <li>• 4 passport photographs**</li> <li>• proof of enrolment at Hasselt University</li> <li>• EHI-card or proof of insurance</li> <li>• proof of scholarship or proof of enrolment as Erasmus student or a declaration on honour of proof of solvency is also accepted</li> <li>• copy of your rental contract of correct address</li> </ul>	"verklaring van inschrijving" (statement of registration)
<b>Non-EU-citizen</b> < 3 months	<ul style="list-style-type: none"> <li>• passport with visa C (if required)</li> <li>• 2 passport photographs**</li> <li>• proof of enrolment at Hasselt University</li> <li>• copy of your rental contract or correct address</li> </ul>	"aankomstverklaring" (statement of arrival) valid for 90 days (approx. 5 euros)
<b>Non-EU-citizen</b> > 3 months	<ul style="list-style-type: none"> <li>• passport with visa D</li> <li>• 4 passport photographs**</li> <li>• proof of enrolment at Hasselt University</li> <li>• proof of scholarship, proof of solvency or proof of guarantorship</li> <li>• copy of your rental contract or correct address</li> </ul>	"bewijs inschrijving vreemdelingenregister (BIVR)"* (registration foreigners register, approx. 15 euros)  Residence permit: 'A-card'***

\* After registration at the local Town Hall, a police officer will pass by your residence to check that you actually live there before you receive your BIVR. If you are not at home you will receive a letter inviting you to report to the police station of your district.

\*\* Passport photographs: strictly without any headgear. If you insist on wearing a headgear on the picture, you need to obtain a document, signed by an authorized imam. For more information, please contact + 32 11 875 961.

\*\*\*A-Card: Pls. note the **expiration date** on the front of this card; so do not forget to renew it in time !

## Changes/leaving Belgium

- Change of address: notify the Town Hall and alter the address in your student file.
- Leaving Belgium at the end of your studies/stay: notify the Town Hall.

- Leaving Belgium in the middle of your studies/stay: notify the Town Hall and the Student Administration: Leen Jorissen (leen.jorissen@uhasselt.be).
- Renewal of your residence permit: don't forget to go to the Town Hall at least 45 days before the expiration date.

## Taxes

### Taxes in Belgium

All guests, staying in Belgium for > 3 months, will be considered as 'Resident in Belgium' and therefore will receive several official letters and invoices regarding taxes. Below some more info:

#### Province tax:

35 EURO to be paid by everybody living in this province (Limburg). If you have the so-called 'VT-status' of your mutuality (meaning you have no or very low income), you can apply for a 50 % reduction by sending the Province a proof of your VT-status (put a personal sticker of your mutuality on the invoice and send it back to the sender). You will then receive a new invoice for 17,5 EURO.

#### Waste tax:

This invoice, sent yearly by a company called 'Limburg.Net', asks you to pay for litter removal and handling. If however you already pay a similar fee, directly to your landlord, you can inform the company about this.

### General Income Tax

In May/June you might receive a 'brown envelope', containing your tax declaration in Belgium and an extra envelop.

For those who had no Belgian income at all in the previous year:

- First go to 'My Academic file' and print a copy of your 'Proof of Enrolment' at UHasselt.
- Then take the red form in the envelop, go to the last page and look for the word '*Datum*' on the bottom of the page, fill in the current date

and sign the document at '*Handtekening*'.

- Put this red form along with your 'Proof of Enrolment' in the extra envelop and send it by mail to the address as mentioned on it in 'Ledeberg'.

**Tip:** you could also bring it to the Taxes registration office in the Voorstraat 43 in Hasselt, that saves you a stamp!

**Please take note:** the General Income Tax must be done by June 29th, 2022!

TAXES

## Health insurance – Health care

### Health insurance

Individual health insurance is compulsory in Belgium.

If you are from an EEA country you are insured through your own national health service by the European Health insurance card (EHI). This card covers expenses in the event of illness abroad, and is valid for a maximum of one year.

When you see a doctor or a specialist, you will be given a “certificate of services provided”. In some cases, the pharmacist provides you with a document for refund purposes (certificate model 704). Bring these certificates, together with your EHI-card to the mutuality office. We recommend that you also acquire travel insurance.

However, if you are from a non-EEA country, you have to enrol in an all-inclusive insurance, called SIP (Student Insurance Program). If you are staying longer than 6 months you should also subscribe to the health insurance fund CM (Christelijke Mutualiteit) or ‘De Voorzorg’. This can be done during the Orientation Program in September or by going to their office in Diepenbeek.

Also note that a representative of CM will hold office **on the first Tuesday, between 13.30-16.30, of the following months: September, October, November, December, February, April and June.**

**Tip:** Always keep all medical documents you receive for later reimbursement.

When visiting a doctor, pharmacy or hospital always take your EHI or ID card with you.

In general always visit a local ‘home’ doctor first. Never go to hospital directly, unless it is an emergency!

More info on reimbursement and SIP:

[www.uhasselt.be/medical-refund](http://www.uhasselt.be/medical-refund) / [www.sipinsurance.eu](http://www.sipinsurance.eu)

For further information about health insurance, visit:

[www.cm.be/international-website](http://www.cm.be/international-website)

### Flemish Social Protection Programme

As a foreign student, you are not obligated to join this programme. To prove your status, please send your ‘proof of enrolment’ back to the sender.

### Health Care

#### Doctors:

- Huisartsen De Demer, Stationsstraat 28, 3590 Diepenbeek 011 24 70 00
- Huisartsen De Steen, Steenweg 172, 3590 Diepenbeek 011 32 30 01
- Huisartsen Hygeia, Kramerslaan 9 bus 4, 3500 Hasselt 011 27 83 80

Or check the website: [www.mediwacht.be](http://www.mediwacht.be)

#### Dentists:

- Dentist Luc Cosemans, Ganzebroekstraat 10, Diepenbeek, 011 32 18 01
- Dentist Chris Kruijen, Marktplein 38, Diepenbeek, 011 32 13 83

---

#### ADDRESSES OF THE HEALTH INSURANCE FUND CM

Didier Verding Kerklaan 6 bus1, Diepenbeek  
Vismarkt 11, Hasselt  
Prins-Bisschoppensingel 75, Hasselt

- Dentist-centre CMT, Luikersteenweg 232 b2, Hasselt, 011 28 45 45
- Dentist-centre Molaar, Maastrichtersteenweg 198/1, Hasselt, 011 76 28 68

*Eye doctor:*

- Dr. K. Noben, Stationsstraat 88, Diepenbeek, 011 33 11 22

*Hospitals:*

- Virga Jesse Campus, Stadsomvaart 11, Hasselt, 011 33 55 11

- Salvator Campus, Salvatorstraat 20, Hasselt, 011 28 91 11

*Urgent medical assistance:*

- 112 (= international emergency number)

*Medical assistance at night and during the weekend:*

- Doctor: one central number: 011 33 65 33

*Detox centre:* (for all kinds of intoxication) +32 70 245 245



**Tip:** Pharmacists can be identified by a green cross; at night and during the weekend the name of the pharmacist on duty is displayed in the window of each pharmacy. You can also find the addresses online: [www.apotheek.be](http://www.apotheek.be)



## Accommodation

If you are looking for a student room, check out available rooms at:

[www.uhasselt.be/accommodation](http://www.uhasselt.be/accommodation).

More info and help: [stefanie.commenee@uhasselt.be](mailto:stefanie.commenee@uhasselt.be), [niels.lambrichts@uhasselt.be](mailto:niels.lambrichts@uhasselt.be) or [huisvesting@uhasselt.be](mailto:huisvesting@uhasselt.be)

If you prefer to look for a room once you are in Belgium, you can also choose to stay several days or more in the Youth Hostel in Hasselt and look for the best place with your own eyes! The hostel is perfectly located, close to Hasselt railway station and at a walking distance of the citycentre of Hasselt. It is a brand new building with a young, modern look where you can spend some time exploring by strolling around Hasselt and waiting for your new home.

For more information you can contact the Hostel on this address:

[www.jeugdherbergen.be/en/youth-hostels/city-hostels/hasselt](http://www.jeugdherbergen.be/en/youth-hostels/city-hostels/hasselt).

If you are PRE-registered at Hasselt University ([www.uhasselt.be/ApplicationForm](http://www.uhasselt.be/ApplicationForm)) you can even stay there at the 'Members Rate' which will give you a 10% discount. Prices range between €23 and €29 depending on your age and type of room.

**Tip:** Once you have found a place to live, please put your name on the doorbell. This is mandatory by police law.

## Mobile phones

If you wish to use a mobile phone in Belgium you should be aware that there are a few major competing networks:

- proximus: [www.proximus.be](http://www.proximus.be)
- base: [www.base.be](http://www.base.be)
- mobile vikings: [www.mobilevikings.com](http://www.mobilevikings.com)
- orange: [www.orange.be](http://www.orange.be)
- telenet: [www.telenet.be](http://www.telenet.be)

You can buy a local number and calling credits in many shops or through their website.



## Opening a bank account

It is safer to deposit your money in a bank rather than leaving large amounts of cash in your room or walking around with it.

If you choose to open a bank account in Belgium you will need the following documents:

- a valid passport or identity card, proof of enrolment at Hasselt University;
- a copy of your rental contract;

additional documents for non-EU citizens staying over 3 months: written confirmation of BIVR application, proof of scholarship, visa. For more information on the BIVR application, please see page 17.

A current account provides you with a cash card for 24-hour cash dispensers. Campus Diepenbeek has an ATM inside the university.

There are many branches of different banks in Hasselt. Most banks are open on weekdays from 9.00 until 12.00 and from 14.00 until 16.00. Some banks are open on Saturday morning and have late opening hours once a week.

### Addresses:

- BNP Paribas Fortis, Ridder Portmansstraat 1, Hasselt
- KBC, Gouverneur Verwilghensingel 102, Hasselt (especially for non-EU students)
- Belfius, Havermarkt 36, Hasselt
- Crelan, Stadsomvaart 1, Hasselt
- ING, de Schiervellaan 10, Hasselt
- BNP Paribas Fortis, Marktplein 18, Diepenbeek
- KBC, Kapelstraat 36, Diepenbeek
- Belfius, Dorpsstraat 24, Diepenbeek
- Crelan, Varkensmarkt 10 B11, Diepenbeek



**Tip:** If you register your student/guest card on the “ping ping website” ([www.uhasselt.be/en-pingping](http://www.uhasselt.be/en-pingping)) you can use the photocopiers and buy lunch at all Hasselt University restaurants at a reduced price.

## Language courses

UHasselt offers free Dutch & English language courses. For more information, please check out the website: [www.uhasselt.be/Language-courses](http://www.uhasselt.be/Language-courses)

- If you would like to study Dutch, **Agentschap Integratie en Inburgering** performs a screening of students and refers them to educational institutions. The institutions offer Dutch language courses on various entry levels and at a modest price (or even for free if you follow the integration programme, see page 8). If interested, please contact: [elly.vincken@integratie-inburgering.be](mailto:elly.vincken@integratie-inburgering.be) (02 701 70 73).

**CommArt International**, spin-off of Hasselt University, offers a varied set of e-learning packages (to learn Dutch and other languages) which are characterized by a multimedia approach, combining text, sound and image. The LinguaCom e-learning modules aim at the communicative beginners' level A1-A2 of the Common European Framework of Reference for Languages. The Plurilingua series focuses on linguistic aspects as well as intercultural differences which influence the communication process. You can get a 25% discount if you order through the website of CommArt International. For more information, please consult the website ([www.commart.be/en](http://www.commart.be/en)) or contact: [willy.clijsters@uhasselt.be](mailto:willy.clijsters@uhasselt.be) or [martine.verjans@uhasselt.be](mailto:martine.verjans@uhasselt.be).

## Travel

### Documents required

For a citizen of a country belonging to the EEA (+ Switzerland and Monaco), a national identity card is all you need to travel from one European Union country to another. No passport or visa is required.

Citizens of all non-EEA countries must have a passport with the appropriate visa.

The type C or Schengen visa is for stays under 3 months and allows you to enter Belgium. It also entitles you to travel through a part of Europe, namely the "Schengen area".

The following countries are part of the Schengen area: *Austria, Belgium, Czech Republic, Denmark, Estonia, Finland, France, Germany, Greece, Hungary, Iceland, Italy, Latvia, Liechtenstein, Lithuania, Luxembourg, Malta, the Netherlands, Norway, Poland, Portugal, Slovakia, Slovenia, Spain, Sweden and Switzerland.*

The UK is not one of the countries in the Schengen Area. Be careful with Christmas shopping in London! You might get into the UK but won't be able to return to Belgium!

For stays longer than 3 months, you will need a visa type D or Authorisation for Provisional Sojourn (also referred to as the "Student Visa"). This applies to all international students who do not belong to the EEA area, Switzerland or Monaco.

When travelling, always take your international passport and residence permit with you, even when visiting a city as nearby as Maastricht (The Netherlands).

## Means of transportation

### Railway

The Belgian railway offers various cut-price formulas to travel in Belgium and Europe. You can find more information on the website [www.b-rail.be](http://www.b-rail.be) or at the railway station. Here are some of the most commonly used:

**Go-pass 10:** if you are under 26 years of age, your go-pass entitles you and your friends (under 26) to 10 second class single trip between two Belgian stations. The go-pass is valid for 1 year and costs 55 euros.

**Rail-pass:** similar to the go-pass, but without an age limit, it costs 86 euros.

You can also travel by the high-speed Thalys train from Brussels, Antwerp or Liège to a lot of big cities such as Paris, Amsterdam, Rotterdam, Schiphol, Den Haag, Aachen, Köln and many more ([www.thalys.com](http://www.thalys.com)). Another option is the Eurostar train from Brussels to London, Paris, Lille and Amsterdam ([www.eurostar.be](http://www.eurostar.be)) or the TGV to go to France.

**Tip:** Buy a Campuspas: through your digital 'student file – registration for Campuspas' you can apply for this bus pass which allows you to travel between Hasselt and Diepenbeek for a full year. The Campuspas costs 20 euros. Make sure you have a MOBIB kaart first.







### *Bus*

The name of the local bus company is “De Lijn”. Bus numbers BP, 1, 36, 45 and 20a take you from Hasselt railway station to Hasselt Campus in 10 minutes.

Bus numbers 36, 45 and 20a take you from Hasselt railway station to Diepenbeek Campus in 20 minutes. More information on bus services can be found on the website [www.delijn.be](http://www.delijn.be).

### *Bicycle*

Hasselt University gives you the option of hiring a bike for 25 euros per year after paying a warranty of 70 euros.

In order to speed up the whole process, please proceed as follows, if you want to have a bike from the first day:

- go to [citybike.uhasselt.be](http://citybike.uhasselt.be) and create a login. Please NOTE: *when your Home Address shows another country but Belgium, you will NOT have to fill in the so-called ‘National Number’*;
- then go to ‘Rent a bicycle’, fill in all fields, and print your contract;
- **read/print the ‘Rent Regulations’**;
- pay the 70 EUROS deposit via bank transfer, if possible, and bring a proof of payment;
- alternatively you can pay in cash (only at Fietsbasis Hasselt) or MAES-TRO-card while here.

**Tip:** Bus tickets are sold in the bookshop at Diep without a valid ticket. In case you receive a fine,



### Airplane

Belgium has a number of commercial airports, but the two major international airports are Brussels Airport ("Brussels Nationaal") in Zaventem and Charleroi Airport ("Brussels South") in Charleroi. Furthermore, Maastricht Airport in Maastricht, the Netherlands is also very near.

Please be aware that every passenger travelling by train to or from Brussels National Airport has to pay a "Diabolo fee" on top of their ticket price. Please consult the following link to read more about the Diabolo fee:

[www.belgianrail.be/en/travel-tickets/tickets/diabolo-fee-from-airport.aspx](http://www.belgianrail.be/en/travel-tickets/tickets/diabolo-fee-from-airport.aspx)

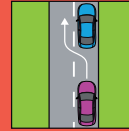
### Taxicabs

When you arrive at Hasselt station, there are taxicabs ready to drive people around. So keep in mind that you can take one if you are not sure about your destination or if you don't want to walk home. You can check for more information via this link: [www.hasseltse-taxi.com/EN/taxi](http://www.hasseltse-taxi.com/EN/taxi)

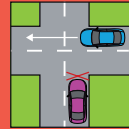
*On Sunday evenings, a taxi will be available to take you from Hasselt station to your accommodation at 21:45 and at 22:15. Tickets have to be bought in advance at the Student Facilities Office for €1,00. You also have to request a taxi in advance on [www.taxihtm.be/nl/studenten](http://www.taxihtm.be/nl/studenten).*

enbeek Campus. Do not take public transport  
please pay as soon as possible.

## Traffic rules



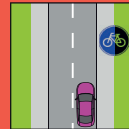
Drive on the right,  
overtake on the left.



Priority is given to the right;  
drivers must stop for traffic  
joining from the right.



Drinking and driving is  
prohibited, for cyclists too.



Cycling on the cycle track  
is mandatory.



Use lights if you are  
cycling at night.



Taking passengers on your  
bicycle carrier is strictly  
prohibited.

## Student jobs

While you are studying (bachelor or master level) at Hasselt University, you may want to combine your studies with a (part-time) job. As a student, you are allowed to work 475 hours per calendar year.

If you come from a EEA country, you are free to start looking for a job in the area. However, as a non-EU member who wants to work during the academic year, you should apply for a 'work permit, type C' at the local city hall. They have all the necessary documents.

During school holidays you can work without a work permit. However, students who arrive in Belgium during the summer preceding the academic year in which they are registering are not allowed to work during that period.

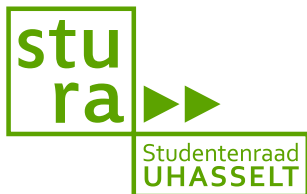
For more info: [www.uhasselt.be/student-employment](http://www.uhasselt.be/student-employment)

**Tip:** During the spring, summer and autumn, many jobs will be available in the local fruit sector, fruit picking for example.



# Leisure

## The International Council



The International Council is part of StuRa (the Student Council), but specifically for international students. The International Council represents the international students and takes care of any concerns the students might have during their stay in Belgium.

Feel free to join the International Council or channel your problems or concerns on: [internationalcouncil@uhasselt.be](mailto:internationalcouncil@uhasselt.be) and follow the International Council on Facebook: [www.facebook.com/uhasselt.intl.council](https://www.facebook.com/uhasselt.intl.council).

## Buddy Programme

The International Office organizes a Buddy Programme: a match up between a Hasselt University student living in Belgium and an international student. This can provide you a helping hand as you settle down and it can make your integration at Hasselt University easier. More information at [www.uhasselt.be/International-activities](http://www.uhasselt.be/International-activities).







## Student Unions

### International student unions

*ESN Hasselt - association for exchange students*



Membership costs €10.00.

Activities: pub crawls, barbecue, city trips, parties,...

Email: [esn@student.uhasselt.be](mailto:esn@student.uhasselt.be)

Facebook: [www.facebook.com/esnhasselt](https://www.facebook.com/esnhasselt)

### Faculty student unions

*JOSS* - student and alumni of Statistics, with a lot of international members

Website: [www.uhasselt.be/JOSS](http://www.uhasselt.be/JOSS)

Facebook: [www.facebook.com/305943376094213](https://www.facebook.com/305943376094213)

*Biomedica* - society for Biomedical Sciences students

Facebook: [www.facebook.com/biomedicadiepenbeek](https://www.facebook.com/biomedicadiepenbeek)

*DIPs* - society for Chemistry and Biology students

Facebook: [www.facebook.com/studentenvereniging.dips](https://www.facebook.com/studentenvereniging.dips)

*Commeatus* - society for Transportation Sciences students

Facebook: [www.facebook.com/commeatus.diepenbeek](https://www.facebook.com/commeatus.diepenbeek)

*Hermes* - society of the faculty of Applied Economics.

Facebook: [www.facebook.com/hermesuhasselt](https://www.facebook.com/hermesuhasselt)

*Filii Lamberti* - society for students of mathematics, physics and informatics.

Facebook: [www.facebook.com/filii.lamberti](https://www.facebook.com/filii.lamberti)

*Miezerik* - society of the Faculty of Medicine

Facebook: [www.facebook.com/miezerik](https://www.facebook.com/miezerik)

*Themis* - society of the Faculty of Law

Facebook: [www.facebook.com/Themis.UHasselt](https://www.facebook.com/Themis.UHasselt)

*Sofa* - society of the Faculty of Architecture

Facebook: [www.facebook.com/studentenvereniging.sofa](https://www.facebook.com/studentenvereniging.sofa)

*A.S.G.* - society of the faculty of Industrial Sciences

Facebook: [www.facebook.com/asgdiepenbeek](https://www.facebook.com/asgdiepenbeek)

*Rekinéa* - society of the faculty for Rehabilitation Sciences and Physiotherapy

Facebook: [www.facebook.com/rekineadiepenbeek](https://www.facebook.com/rekineadiepenbeek)



## Sports

If you want to practice sports, there are a lot of possibilities in Hasselt. 'Studentensport Limburg' offers an extensive selection of sports for students, from ball sports to shape workouts, dance classes and combat-centred sports. All these activities are organised on or around the campus of Hasselt and Diepenbeek.

There are also reductions for students with a sports card. Discover all sport activities and schedules on [www.studentensportlimburg.be/en](http://www.studentensportlimburg.be/en).





## Sports card

A sports card gives you access to all kinds of sports activities at reduced prices. You can have discounts on climbing, swimming, ice skating,...

You can register for your sports card in your student file (register for - sports event).

The sports card costs € 20, but some mutualities offer a reimbursement on this price. The CM will repay € 15 of the sports card.

For more information: [www.studentensportlimburg.be/en](http://www.studentensportlimburg.be/en)

Contact: [sport@uhasselt.be](mailto:sport@uhasselt.be)

Sports coordinator: Katleen De Wit ([katleen.dewit@uhasselt.be](mailto:katleen.dewit@uhasselt.be)) and Martine Libens ([martine.libens@uhasselt.be](mailto:martine.libens@uhasselt.be))

## Fitness

Hasselt University offers a discount for students who have a personal fitness subscription. You can have an intervention of € 75 for a personal subscription for a year.

### ATTENTION! CONDITIONS FOR INTERVENTION FITNESS MEMBERSHIP:

- You have a sports card.
- It has to be a personal subscription for a full year or an academic year.
- The subscription has to start **before the 31st of March**.
- You need to apply for the intervention **before the 1st of April**.

You can find a form for intervention in your student file 'aanvraag tussenkomst fitness' or at the student facilities desk. Fill in the form and add your proof of payment, a copy of your subscription and a copy of your sports card. The intervention will be paid on the bank account mentioned in your student file. If you have a Belgian bank account, add this one to your student file.

**- No intervention for Basic Fit!**

*Fitness centers in Hasselt or Diepenbeek:*

i-fitness Hasselt, St. Jozefstraat 10.2.1 (above Media Markt), 3500 Hasselt

Basic-Fit Hasselt, Badderijstraat 19, 3500 Hasselt

Basic-Fit Diepenbeek, Ginderoverstraat 7, 3590 Diepenbeek

## Kapermolen swimming pool

Kapermolen swimming pool is the public swimming complex of Hasselt. It has indoor and outdoor pools, an outdoor relax area and a beach bar. Students with a sports card have a free entrance to the complex. Make sure you bring your student card and sports card to Kapermolen. You can find the opening hours on [www.hasselt.be/kapermolen](http://www.hasselt.be/kapermolen).

Address: Koning Boudewijnlaan 22, Hasselt

## Cultural activities

Expand your horizon, visit some historical Belgian towns!

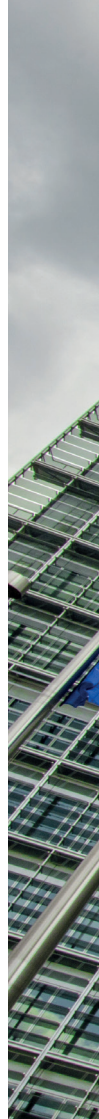
**BRUSSELS** is the capital of Belgium and the administrative centre of the European Union. The vibrant atmosphere of Brussels is enhanced by picturesque medieval streets, lively squares, impressive monuments, interesting restaurants and an active cultural life. The most famous attractions are the Grand Place (main square), the Atomium and the Manneken Pis statue.

**ANTWERP**, daughter of the river Scheldt, is the second largest city in Belgium. It is a splendid city with numerous architectural highlights, most of which date from the 16th and the 17th century. Antwerp is also known as the diamond centre of the World. If diamonds really are a girl's best friend, then most of the ladies amongst you will not want to miss out on a visit to the diamond district near the railway station.

**BRUGES** is called: 'the Venice of the north'. This splendid medieval city is one of Belgium's crown jewels. In no other European city are the feel and look of medieval times as present as in this city close to the north sea. As a testament to its medieval beauty, Bruges has been named an UNESCO World Heritage Site.

**GHEENT** is the fourth largest city in Belgium with around 259,000 inhabitants. It is not as big as Antwerp but bigger than Bruges. It is also less well-known to tourists than the often praised Bruges. However, for some people Ghent is the real diamond of Flanders and Belgium. In a unique way, Ghent has managed to preserve its medieval power while keeping up with modern times.

**AACHEN** is a city in Germany that lives and breathes Europe. It is practically Europe in miniature. Aachen, on the border with Belgium and the Netherlands, has encapsulated the spirit, values and ideals of Europe since the days of Charlemagne. Indeed the Charlemagne Prize for services to European unity has been awarded at Aachen's town hall since 1950.









# Addendum

## Useful addresses

### *Police*

Local police Limburg Hoofdstad (LRH)

Zwarte-brugstraat 6, Hasselt

Emergency calls: 101

Other calls: 011/93 89 38

### *Fire Department*

Hasselt: 011/24 88 88

Emergencies: 112 (you will be connected to the emergency dispatch switchboard).

### *Laundry*

HASSELT:

- *WashNDry*, Demerstraat 107
- *Pascale*, Oude Luikerbaan 100
- *Biancha*, Kuringersteenweg 93
- *Miele*, Overdemerstraat 118

DIEPENBEEK:

- *Speed Queen*, Dorpsstraat 4
- *Mr. EcoWash Diepenbeek*, Nieuwstraat 167
- *Wassalon Prima Wash*, Nierstraat 28

### *Copy Services*

HASSELT:

- Copy & Design Koning Boudewijnlaan 4







- Druk & Copyservice Bampslaan 10

#### *Places of worship*

##### *Catholic churches*

##### DIEPENBEEK:

- St. Servatius church, Strobanderplein Diepenbeek (every first Sunday of the month there is a service in English at 10 a.m.)
- H.Hart Church , Patersplein Rooierheide Diepenbeek

##### HASSELT:

- Cathedral: Vismarkt w/n
- Church Godsheide: Kiezelstraat w/n
- Church Sint-Katarinawijk: Sint-Katarinaplein w/n

##### *Protestant churches*

##### HASSELT:

- United Protestant Church: Kuringersteenweg 81

##### *Evangelical churches*

##### HASSELT:

- Evangelical Community "De Zaaier": Runkstersteenweg 303

##### DIEPENBEEK:

- Evangelical Community Diepenbeek: Begoniastraat 9

##### *Orthodox churches*

##### GENK:

- Greek Orthodox Church: G.A. Galopinstraat 21
- Oekraïen Orthodox Church: Hulshagenstraat w/n

##### *Mosques*

##### HASSELT:

- Badr Mosque: Mouterijstraat w/n

##### *Jewish synagogues*

##### ANTWERP:

- Synagogue Shomré Hadass: Terlitstraat 35

##### BRUSSELS:

- The Great Synagogue: Regentschapsstraat

##### *Buddhist stupa*

##### SCHOTEN:

- Buddhist Stupa: Kruispadstraat 33

More information can be obtained from our campus pastor:

[karin.daniels@uhasselt.be](mailto:karin.daniels@uhasselt.be)

##### *Embassies*

A list of foreign embassies in Belgium can be found at the following address:

[http://diplomatie.belgium.be/en/services/embassies\\_and\\_consulates/](http://diplomatie.belgium.be/en/services/embassies_and_consulates/)



# Useful translations

ENGLISH - DUTCH

## HEALTH

General practitioner - Geneesheer / arts  
Pharmacist - Apotheker  
Dentist - Tandarts  
Physiotherapist - Kinesist  
Insurance - Verzekering

## NUMBERS

one - één  
two - twee  
three - drie  
four - vier  
five - vijf  
six - zes  
seven - zeven  
eight - acht  
nine - negen  
ten - tien

## AVAILABILITY

Open - Open  
Closed - Gesloten  
Before noon/morning (am) - Voormiddag (vm)  
Afternoon (pm) - Namiddag (nm)  
Holiday - Verlof/vakantie

## DAYS OF THE WEEK

Monday (Mon) - Maandag (Ma)  
Tuesday (Tues) - Dinsdag (Di)  
Wednesday (Weds) - Woensdag (Wo)  
Thursday (Thurs) - Donderdag (Do)  
Friday (Fri) - Vrijdag (Vr)  
Saturday (Sat) - Zaterdag (Za)  
Sunday (Sun) - Zondag (Zo)

## ACCOMMODATION

For rent - Te huur  
For sale - Te koop

## GENERAL EXPRESSIONS

How much does this cost? - Hoeveel kost dit?  
Where is the bus stop? - Waar is de bushalte?  
What do you call this? - Hoe heet dit?  
Where can I find a doctor? -  
Waar vind ik een dokter?  
Thank you - Dank u / Bedankt  
Here you are - Alstublieft  
Hello - Goedendag  
See you/goodbye - Tot ziens

## FOOD, BEVERAGES AND OTHER NECESSITIES

Beer - Bier  
Bread - Brood  
Milk - Melk  
Coffee - Koffie  
Cheese - Kaas  
Ham - Hesp  
Eggs - Eieren  
Washing powder/detergent -  
Waspoeder  
Blanket - Deken  
Pillow - Kussen  
Sheet - Laken  
Mattress cover - Matrasbeschermer  
Duvet - Dekbed  
Towel - Handdoek  
Kitchen towel - Keukenhanddoek



Campus Hasselt | Martelarenlaan 42 | BE 3500 Hasselt  
Campus Diepenbeek | Agoralaan Gebouw D | BE 3590 Diepenbeek  
[www.uhasselt.be/en](http://www.uhasselt.be/en)