

2025-2026

# Welcome Guide

UHASSELT

UHASSELT

KNOWLEDGE IN ACTION

In case of emergency...

European international emergency number

**112**

police  
emergencies

**101**

non-urgent  
police matters

**011 93 89 38**

for Hasselt and Diepenbeek

ambulance &  
fire department

**100**

Safety on campus



**other emergency numbers:**

[112.be/en/other-emergency-numbers](https://112.be/en/other-emergency-numbers)



## **Welcome to Hasselt University** **5**

- Welcome 6
- Fun facts 7
- Maps campus 8

## **Pre-arrival information** **13**

- Visa information 14
- Proof of solvency 14
- Travelling to Belgium 14
- Study fees 14
- Accommodation 14
- Opening a bank account 15
- Useful contacts 16

## **Upon arrival** **19**

- Administrative formalities 20
- Mobile phones 23

## **Living in Belgium** **25**

- Health care 26
- Costs of living in Belgium 27
- Traffic rules 29
- Student jobs 30
- Language courses 31
- Taxes 32

## **Academic support** **35**

- Student point 36
- Academic advisors 36
- Faculty coordinators 36
- Study coaches 37

- Student psychologists 37
- Reasonable facilities 37
- Finding information 38
- Academic calendar 38
- Course schedule + my timetable 38
- Exam schedule 38
- Academic programme 39
- Blackboard 39
- Study progress measures 39

## **Campus life** **41**

- Library 42
- University restaurant 42
- Study materials 42
- Internet 43
- Green Office 43
- Silence point 43
- The International Council 44
- PhD Council 44
- Buddy programme 44
- International student unions 44
- Expat centre 45
- Sports 46
- Culture 48

## **Useful addresses & translations** **51**







# Welcome to Hasselt University

Dear student,  
Dear PhD student,  
Dear guest,

We are delighted that you are planning a stay at our university and we are looking forward to welcoming you in Hasselt soon.

Hasselt University is a young and dynamic university and is located on two campuses; a city campus right in the centre of Hasselt and a campus in a green environment, just outside the city of Hasselt (in Diepenbeek). The Netherlands, Germany and the French speaking part of Belgium (Wallonia) are all nearby.

While preparing for your stay, the questions and practicalities you face may seem endless. This Hasselt University Welcome Guide answers the practical questions about your arrival and about living, studying and doing research in Belgium and Hasselt. Should you have further questions about your stay after reading this guide, please do not hesitate to reach out.

See you soon!

International Office & Doctoral Schools  
**[uhasselt.be/en/  
uhasselt.be/en/doctoral-schools](https://uhasselt.be/en/uhasselt.be/en/doctoral-schools)**

# WELCOME TO BELGIUM & HASSELT UNIVERSITY!

## Did you know?

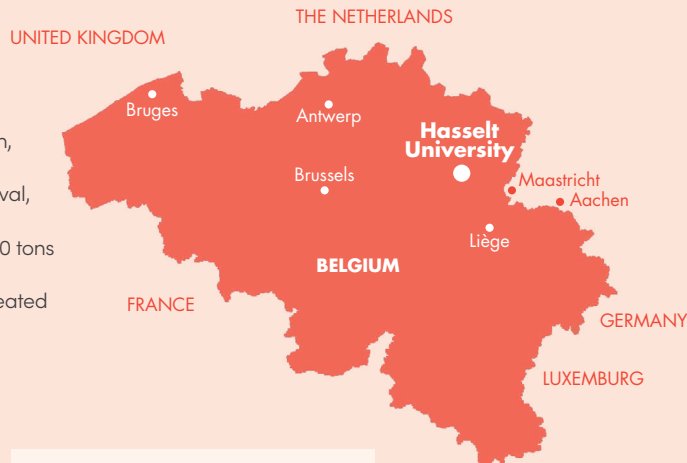
Belgium is one of the smallest countries in Europe, yet it has **six governments** and **six parliaments**—talk about complicated! It's famous for **chocolate, waffles, fries and beer**

(but don't call them "French fries" here!).



## Fast Facts about Belgium:

- ✓ Three official languages: Dutch, French & German
- ✓ The world's biggest music festival, Tomorrowland, happens here!
- ✓ Belgium produces over 220,000 tons of chocolate annually
- ✓ The Smurfs and Tintin were created by Belgian artists!

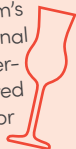


## Hasselt – Small but full of charm!

Hasselt is the capital of Limburg province and is known for:

### Jenever

Belgium's traditional juniper-flavored liquor



### Pukkelpop

A yearly summer music festival

Beautiful green spaces like **Bokrijk, cycling through the water & the Japanese Garden**

### Speculoos

A spiced biscuit, perfect with coffee!



## Hasselt University at a Glance

Ranked among the **top 350 universities** worldwide!

Over **7,752 students** & **1,800 staff**

Home to **seven faculties** & **three schools**

# QUIZ TIME!

## Question 1

What is Belgium's national symbol?

- ☐ Manneken Pis
- ☐ The Atomium
- ☐ The Lion of Flanders

## Question 2

Which city is known as the "Capital of Europe"?

- ☐ Antwerp
- ☐ Brussels
- ☐ Liège

## Question 3

What is the name of Belgium's famous comic-book reporter?

- ☐ Lucky Luke
- ☐ Tintin
- ☐ Asterix

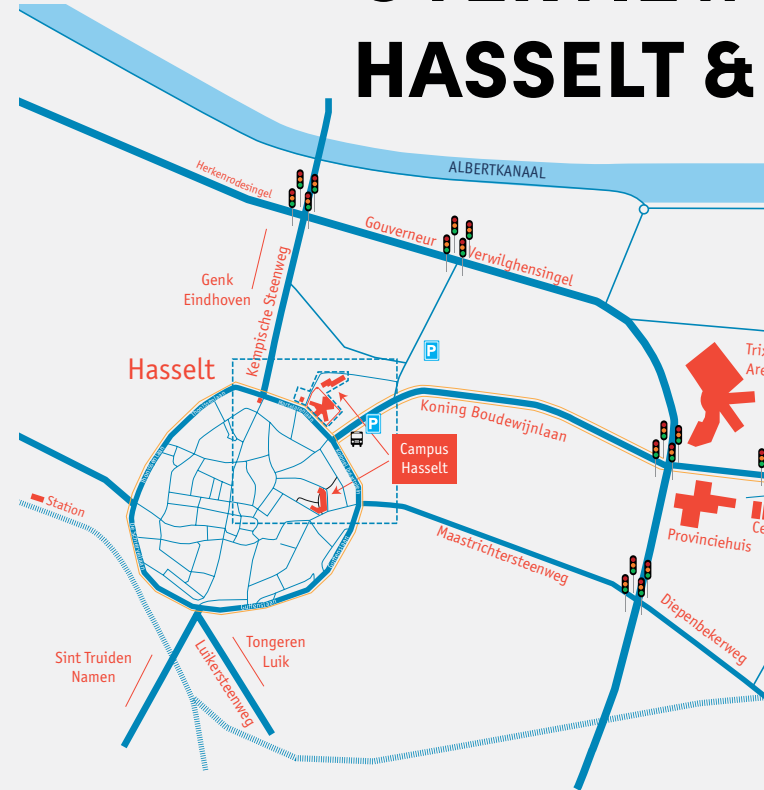
**Want to learn more? [visitbelgium.com](https://visitbelgium.com) & [visithasselt.be/en](https://visithasselt.be/en)**



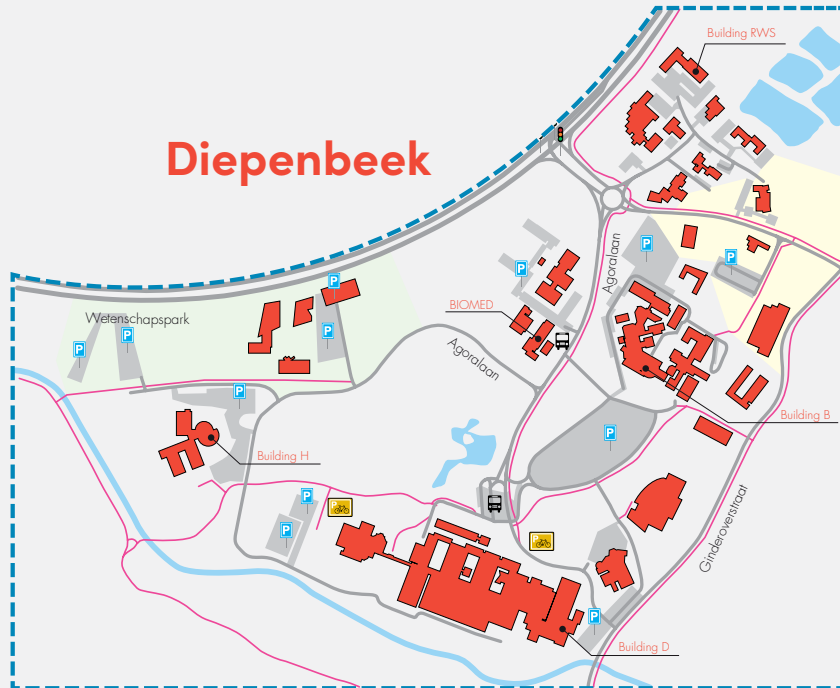
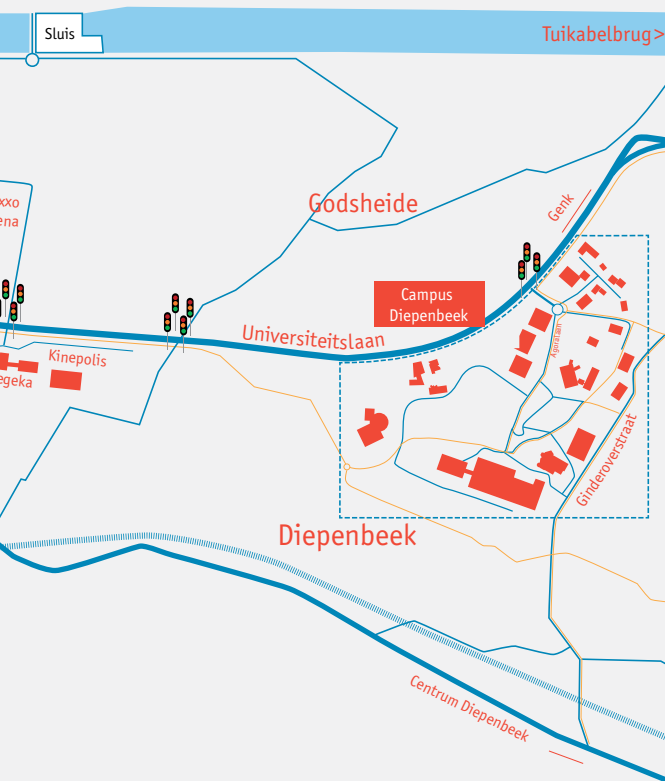
## Hasselt



# OVERVIEW HASSELT &



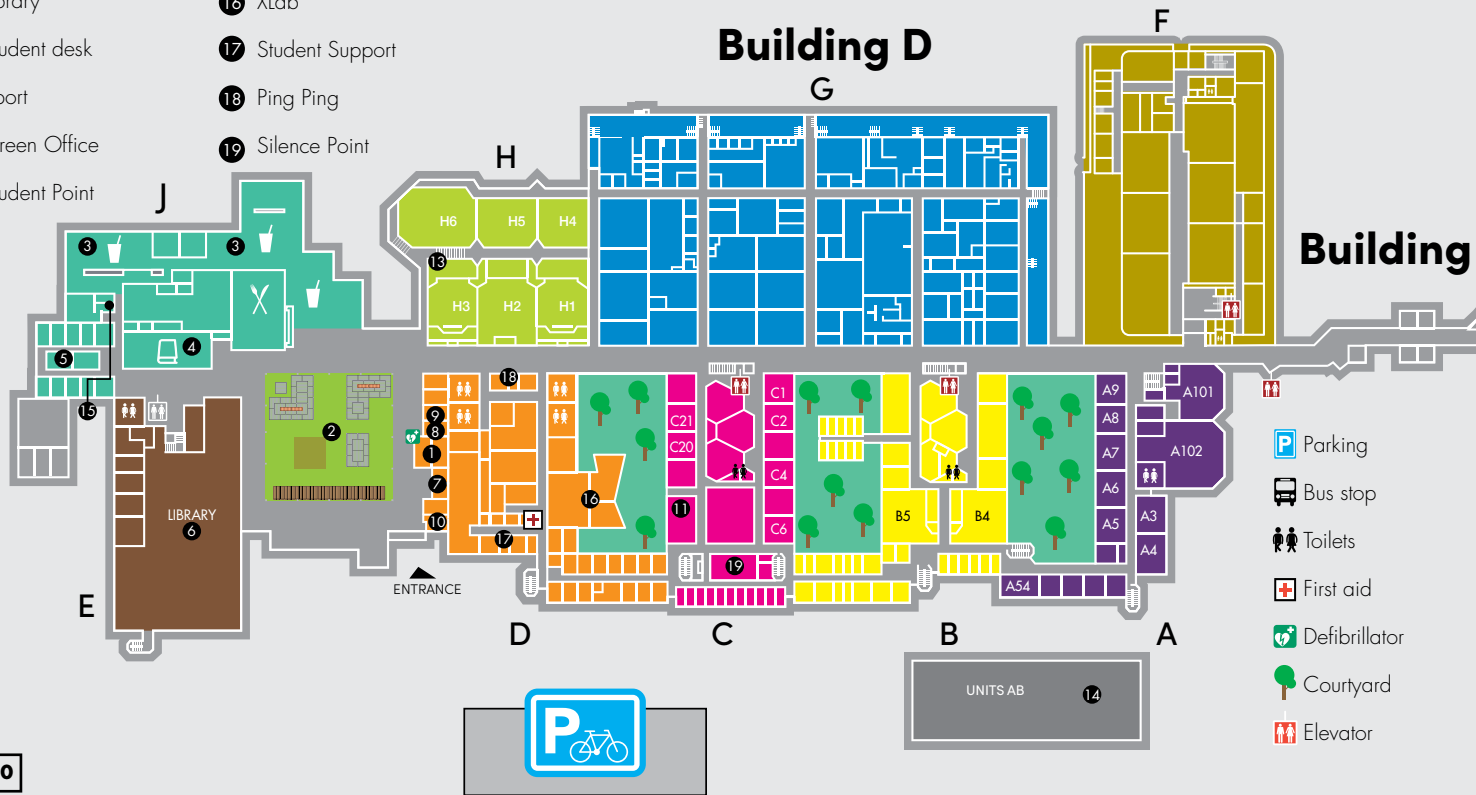
# CAMPUS DIEPENBEEK



- |                         |                                    |
|-------------------------|------------------------------------|
| 1 Reception             | 11 Helpdesk                        |
| 2 Agora                 | 12 Agora Architecture building     |
| 3 Cafeteria             | 13 Cafeteria Architecture building |
| 4 Bookshop              | 14 Units AB                        |
| 5 Student clubs / STURA | 15 VEDO (basement)                 |
| 6 Library               | 16 XLab                            |
| 7 Student desk          | 17 Student Support                 |
| 8 Sport                 | 18 Ping Ping                       |
| 9 Green Office          | 19 Silence Point                   |
| 10 Student Point        |                                    |

# Detail campus Diepenbeek

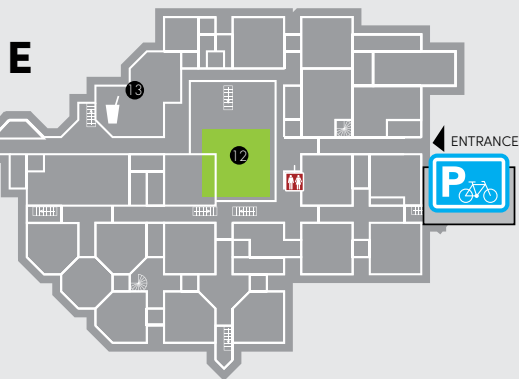
Building D, Agoralaan, 3590 Diepenbeek



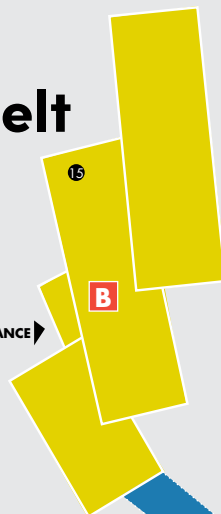


# Detail campus Hasselt

Martelarenlaan 42, 3500 Hasselt



ENTRANCE →



## **A** OLD PRISON

- ① Reception
- ② Panopticum
- ③ Foyer
- ④ Student support department (1st floor)
- ⑤ Student facilities department (1st floor)
- ⑥ Aula Louis Verhaegen - Auditorium 1
- ⑦ Aula Louis Roppe - Auditorium 2
- ⑧ Student Point
- ⑨ Helpdesk
- ⑩ Outside auditorium
- ⑪ Cafeteria
- ⑫ Restaurant
- ⑬ Bookshop
- ⑭ PingPing

## **B** LAW BUILDING

Faculty of Law  
Classrooms  
⑮ Silence Point



ENTRANCE



# **Pre-arrival information**



## Visa information

A visa should be applied for at the Belgian Embassy or Consulate in the home country well in advance.



## Proof of solvency

When applying for a visa or a residence permit, students with a non-EEA nationality are asked to prove their solvency. PhD students can prove their solvency via the scholarship document obtained by the HR Department ([hr-international@uhasselt.be](mailto:hr-international@uhasselt.be)).



## Travelling to Belgium



Belgium has a number of commercial **airports**, but the two major international airports are Brussels Airport in Zaventem and Charleroi Airport ("Brussels South") in Charleroi. Furthermore, Maastricht Airport and Eindhoven Airport, both in the Netherlands, are also very near.

Please note that every passenger travelling by train to or from Brussels Airport has to pay a "Diabolo fee" on top of their ticket price. Please consult the website of NMBS for further information.



When you arrive at Hasselt station, there are **taxicabs** ready to drive people around. You can check the following links for more information:

[www.taxihtm.be/](http://www.taxihtm.be/)

Are you an international student or an exchange student at Hasselt University arriving for the first time? Hasselt University wants to make your first trip to your student room/lodging as smooth as possible. We refund part of the price of your taxi from Hasselt station or any airport in Belgium. More information on taxi refund, contributions and options for public transport check our website:

[uhasselt.be/en/about-hasselt-university/contact](http://uhasselt.be/en/about-hasselt-university/contact)

[uhasselt.be/en/international/from-abroad/before-arrival/taxi-refund](http://uhasselt.be/en/international/from-abroad/before-arrival/taxi-refund)

## Study fees

As a master student at Hasselt University, you pay study fees each academic year (this does not apply to exchange students). This tuition fee consists of a fixed part and a variable part per credits taken.

As a PhD student, you have to pay tuition fees at your first enrollment and in the academic year of defence. If you are preparing a joint PhD, the arrangements set out in the joint PhD agreement between the two universities apply.

[www.uhasselt.be/en/study/application-and-admission/tuition-fees](http://www.uhasselt.be/en/study/application-and-admission/tuition-fees).

## Accommodation

### STUDENT ROOM

If you are looking for a student room check our website on student housing. [kotatlimburg.be/en/looking-for-a-room/](http://kotatlimburg.be/en/looking-for-a-room/)  
More info and help: [housing@uhasselt.be](http://housing@uhasselt.be)



If you prefer to look for a room once you are in Belgium, you can also choose to stay several days or more in Hostel H in Hasselt and look for the best place on the spot! The hostel is perfectly located, close to Hasselt railway station and within walking distance of Hasselt city centre. It is a building with a young, modern look where you can spend some time exploring and strolling around Hasselt while looking for your new home.



A stay in a hotel or airbnb is possible. Mind that it can take quite a while to find a student room. If you are looking for a room via a Facebook page of which Hasselt University is not the initiator, be alert for scamming or fraud.



Once you have found a place to live, please put your name on the doorbell. This is mandatory by police law and you could be fined if you neglect to do so.

If you are pre-registered at Hasselt University, you can even stay there at the 'Members rate', which gives you a 10% discount. Simply mention it when making your reservation.

[www.jeugdherbergen.be/en/hasselt](http://www.jeugdherbergen.be/en/hasselt)

### APARTMENT

You can also rent an apartment/house on the regular market. Be aware that additional expenses are often added to the rental price. The rent typically includes a base rent along with monthly charges. Your rental agreement should clearly specify which costs are included in the rent. Only expenses for heating, electricity, water, telecommunications (internet) and city tax or second residence tax can be charged separately. Additional costs to consider include fire insurance, as well as internet and TV fees.

[www.immoweb.be/en](http://www.immoweb.be/en)

[www.era.be/en](http://www.era.be/en)

### Opening a bank account

At KBC Bank, you can already start the process of opening a bank account remotely.

You will have to enter some personal data, as well as upload some documents:

- A clear photo or copy of your identity card or passport.
- Proof of your current domicile address (e.g. a declaration from your local authority or a copy of a utilities bill). Please make sure that this document bears a signature and date.
- Proof of your future school or place of work (this could be your acceptance letter from Hasselt University).

Upon your arrival, you just have to turn in one more document which you receive after registration at the town hall (this procedure can also be done remotely, more information is provided later in this brochure).



## Useful contacts at our university

Meet the people and driving forces behind our teams, who make a daily difference in the welcome, guidance and support of international (PhD) students and staff. Scan the QR code and discover how each team helps shape an inspiring international environment.



### **SUPPORT INTERNATIONAL (PHD) STUDENTS & STAFF**

Stefanie Commeene  
[stefanie.commeene@uhasselt.be](mailto:stefanie.commeene@uhasselt.be)



### **STUDENT ADMINISTRATION MOBILITY**

Erika Vandersmissen / Leen Jorissen  
[erika.vandersmissen@uhasselt.be](mailto:erika.vandersmissen@uhasselt.be)  
[leen.jorissen@uhasselt.be](mailto:leen.jorissen@uhasselt.be)



### **DOCTORAL SCHOOLS TEAM**



### **FACULTY COORDINATORS INTERNATIONALISATION**

If you are a PhD student with questions about your salary, residence permit, etc,  
you may contact HR department: [hr-international@uhasselt.be](mailto:hr-international@uhasselt.be)











# Upon arrival

## Administrative formalities

### Step 1: Registration at Hasselt University

Upon arrival in Belgium, it is important that you make an appointment for your final registration.

This registration is required in order to get your student/staff/visitor card. This card allows you to make use of the Hasselt University facilities and infrastructure such as the library, bike rent and university restaurants.

Do you have questions related to your application? Please contact the Student administration office: [stua@uhasselt.be](mailto:stua@uhasselt.be).

Please note that we can only finalize your registration once your tuition fee payment has been completed (not applicable for exchange students).

As a PhD student you enroll in a certain doctoral discipline, which means that you are automatically enrolled in a certain doctoral school. In your first and last year, you need to pay a tuition fee.

Once your registration is finished, you can download your proof of enrollment and your final standard form in the student portal. These documents are necessary to register at the town hall and to open a Belgian bank account.

### Step 2: Registration at the town hall

Upon arrival in Belgium all foreigners staying longer than one month must register at their local town hall within eight working days.

#### **Town hall Diepenbeek:**

Dorpsstraat 14, 3590 Diepenbeek  
call 011 49 18 30 or scan the code



#### **Town hall Hasselt**

Limburgplein 1, 3500 Hasselt  
call 011 23 90 00, email [vreemdelingendienst@hasselt.be](mailto:vreemdelingendienst@hasselt.be)  
or scan the code



*Here there's an option to take passport photographs*

#### **Town hall Genk**

Stadsplein 1, 3600 Genk  
call 089 65 36 00, email [info@genk.be](mailto:info@genk.be) or scan the code



### CHANGE OF ADDRESS OR LEAVING BELGIUM?

- ALWAYS notify the town hall and change the address in your student file.
- Leaving in the middle of your stay/studies? Notify the town hall and [stua@uhasselt.be](mailto:stua@uhasselt.be) and your academic advisor. Exchange students also contact [erika.vandersmissen@uhasselt.be](mailto:erika.vandersmissen@uhasselt.be)
- Renewal of your residence permit: do not forget to go to the town hall at least 30 days before the expiration date.  
For more information on renewing your residence permit:
- PhD students also contact HR department.





		master/erasmus students				PhD students	
		EU Citizen < 3 months	EU citizen > 3 months	Non-EU citizen < 3 months	Non-EU citizen > 3 months	> 3 months	<3 months
Documents required		passport or identity card	passport or identity card	passport with visa C (if required)	passport with visa D	EU - citizen: passport NON -Eu citizen: passport with Visa D	EU- Citizen: passport NON -EU citizen: passport with Visa C
		passport photographs	2 passport photographs	2 passport photographs	2 passport photographs	2 passport photographs	2 passport photographs
		proof of enrollment Hasselt University	proof of enrollment*** Hasselt University	proof of enrollment*** Hasselt University	proof of enrollment*** Hasselt University	proof of scholarship + work certificate (obtained from P&O)	proof of scholarship
			proof of scholarship or proof of enrollment as Erasmus student or a declaration on honour of proof of solvency is also accepted	copy of your rental contract of correct address	proof of scholarship, proof of solvency or proof of guarantee	proof of enrollment + standard form*** Hasselt University Health insurance	proof of enrollment *** Hasselt University
		copy of your rental contract or correct address	copy of your rental contract of correct address		copy of your rental contract of correct address	copy of your rental contract of correct address	copy of your rental contract of correct address
			standard form***	standard form***	standard form***	standard form***	standard form***
Documents to receive			Health insurance (private or European health insurance blue card)				
		melding van aanwezigheid (bijlage 3)	verklaring van inschrijving (statement of registration)	verklaring van inschrijving (statement of registration)	bewijs inschrijving vreemdelingenregister (BIVR)* Residence permit: 'A-card'*** (A-card approx. 22 euro)	bewijs inschrijving vreemdelingenregister (BIVR)* Residence permit: 'A-card'*** (A-card approx. 22 euro)	Aankomstverklaring = Bijlage 3 (announcement of presence)

\* After registering at the local town hall, a police officer will visit your residence to verify that you actually live there before your BIVR can be issued. If you're not home at the time of the visit, you will receive a letter inviting you to report to your district's police station.

\*\*A-Card: Please note the expiration date on the front of this card and make sure to renew it on time!

\*\*\*Once your final registration is complete, you can download your official documents via the student portal.

### Step 3: Opening a bank account

If you choose to open a bank account in Belgium you will need the following documents:

- a valid passport or identity card, proof of enrollment at Hasselt University;
- a copy of your rental contract;
- registration at the town hall.

A current account provides you with a cash card for 24-hour cash dispensers. You can also look into online banks such as revolut: [www.revolut.com](http://www.revolut.com).

#### CASH

To withdraw cash you have to go to cashpoints.

[www.bancontact.cash/en/how-use-cash-point](http://www.bancontact.cash/en/how-use-cash-point)

#### ADDRESSES:

- BNP Paribas Fortis, Ridder Portmansstraat 1, Hasselt
- KBC, Gouverneur Verwilghensingel 102, Hasselt (especially for non-EU (PhD)students)
- Belfius, Havermarkt 36, Hasselt
- Crelan, Stadsomvaart 1, Hasselt
- ING, Welvaartstraat 1, Hasselt
- ING, Marktplein 11, 3590 Diepenbeek
- BNP Paribas Fortis, Marktplein 18, Diepenbeek
- KBC, Kapelstraat 36, Diepenbeek
- Belfius, Dorpsstraat 24, Diepenbeek
- Crelan, Varkensmarkt 10 B11, Diepenbeek



## Step 4: Health insurance

Individual health insurance is compulsory in Belgium.

If you are from an EEA country, you are covered by your national health service through the European Health Insurance Card (EHIC). This card covers medical expenses incurred while abroad and is valid for a maximum of one year. When you visit a doctor or specialist, you will receive a 'certificate of services provided'. In some cases, the pharmacist will give you a document for reimbursement purposes (certificate model 704). Bring these certificates, along with your EHIC, to the health insurance fund office. We also strongly recommend taking out travel insurance.

However, if you are from a non-EEA country, you are required to take out insurance. We recommend the all-inclusive AON insurance. If you are staying for more than three months, you are also obliged to join a health insurance fund. We suggest 'CM' (Christelijke Mutualiteit) or 'Solidaris'. You can arrange this during the orientation programme in September or by visiting their local office.

*Didier Verding Kerklaan 6 bus 1, Diepenbeek*

*Vismarkt 11, Hasselt*

*Prins-Bisschopssingel 75, Hasselt*

### PAY ATTENTION!

The extra AON student insurance might be smart to cover civil liability as well, in case you intentionally or even mistakenly injure someone or damage someone's property since some medical and hospital costs are not or only partly covered in the mandatory health insurance. Having this extra insurance or not, can have a significant financial impact. If medical or hospital costs arise, they are not, or only partially, covered by the mandatory health

insurance. Many students are unaware of this and it can have significant financial consequences!

## Mobile phones

If you wish to use a mobile phone in Belgium, you should be aware that there are a few major competing networks:

- proximus: [www.proximus.be](http://www.proximus.be)
- base: [www.base.be](http://www.base.be)
- mobile vikings: [www.mobilevikings.com](http://www.mobilevikings.com)
- orange: [www.orange.be](http://www.orange.be)
- telenet: [www.telenet.be](http://www.telenet.be)
- lycamobile: [www.lycamobile.be/en/](http://www.lycamobile.be/en/)

You can buy a SIM card with a local number and top up your phone balance in the arrival hall of Brussels Airport, many other telecomshops or through their website.





# Living in Belgium



## Health care

### FLEMISH SOCIAL PROTECTION PROGRAMME

This is a compulsory insurance for everyone living in Flanders, starting from the year you turn 26. For more information:

[www.vlaanderen.be/en/joining-the-flemish-social-protection](http://www.vlaanderen.be/en/joining-the-flemish-social-protection)  
tel 02 553 46 90

If you are feeling too ill to function well, but aren't experiencing alarming symptoms, please contact a general doctor ("huisarts") first. Only if necessary, s/he will refer you to a specialist or the hospital.

### Doctors:

The easiest way to find a doctor nearby is through:

[herkenrodehuisartsen.be/ik-zoek-een-huisarts/](http://herkenrodehuisartsen.be/ik-zoek-een-huisarts/).

Type your address next to "Wat is je adres" and consult the map.

### A few extra options:

- Dr. Achmad Noreen-Rahman, Nieuwstraat 112, Diepenbeek, 011 96 95 29
- Dr. G. Lambrichts, Wijkstraat 11, Diepenbeek, 011 35 20 99
- Dr. P. Thoné, Vredestraat 4, 3500 Hasselt, 011 27 29 85 (general medical practice "Medicinae" close to Hasselt train/bus station)
- Dr. A. De Graaf, Thonissenlaan 35, Hasselt, 011 22 33 12

When you visit the doctor, make sure to clearly explain your health insurance situation. If you are registered with CM, you will only need to pay a small fee. If you are registered with AON, you will need to pay the full amount upfront. However, make sure to ask the doctor for a form so you can claim a reimbursement.

Please note that it is normal that a general doctor will not always be able to see you the same day. If you need to see a doctor more urgently, you can call the week watch ("weekwacht") for appointments between 6 PM and 8 AM. You can reach them via 011 33 65 33 - Stadsomvaart 9, 3500 Hasselt (next to the Jessa Hospital).

### Dentists:

- Dentist Sudento, Marktplein 28, 3590 Diepenbeek, 011 910803
- Dentist Elkodent, Volksstraat 71 3590 Diepenbeek, 011 757815
- Dentist-centre CMT, Luikersteenweg 232 b2, Hasselt, 011 28 45 45
- Dentist-centre Molaar, Maastrichtersteenweg 198/1, Hasselt, 011 76 28 68

### Eye doctor:

- Dr. K. Noben, Stationsstraat 88, Diepenbeek, 011 33 11 22

### Hospitals:

- Virga Jesse Campus, Stadsomvaart 11, Hasselt, 011 33 55 11
- Salvator Campus, Salvatorstraat 20, Hasselt, 011 28 91 11

### Urgent medical assistance:

- 112 (= international emergency number)

### Medical assistance at night and during the weekend:

- Doctor: one central number: 011 33 65 33

### Detox centre:

(for all kinds of intoxication)  
070 245 245



Pharmacists can be identified by a green cross at night and during the weekend the pharmacist on duty is displayed in the pharmacy. You can also find the address at [www.apotheek.be](http://www.apotheek.be)

## Living costs in Belgium

Living standards are high in Belgium. Remember that during the first month of your stay, you may have to pay for insurance, deposits, tuition fee and so on... make sure to take this into account when coming to Belgium. Scan the QR code to see the average cost of living in Belgium.



### Interested in reducing your expenses in Belgium, try these options:

- Too good to go: [toogoodtogo.com/nl-be](https://toogoodtogo.com/nl-be)
- 2nd hand furniture: [2dehands.be/](https://2dehands.be/)
- Laptop with student discount: [campusshop.be/](https://campusshop.be/)
- Secondhand books: [booksinbelgium.be/nl](https://booksinbelgium.be/nl)
- Stad Hasselt UITPAS: [hasselt.be/nl/uitinhasselt/uitpas](https://hasselt.be/nl/uitinhasselt/uitpas)

## Travel requirements

Depending on your nationality, different travel documents are required to enter and stay in Belgium or travel within the EU:

- **Citizens of EEA countries, Switzerland and Monaco** can travel within the EU with a national ID card—no passport or visa needed.
- **Non-EEA citizens** need a passport and the appropriate visa.
- **Type C (Schengen visa)**: For stays under 3 months, allowing travel within the Schengen Area.
- **Type D (Student visa)**: Required for stays over 3 months.

Always carry your passport and residence permit when travelling, even for short trips (e.g. to Maastricht, Netherlands).



### Train travel in Belgium & Europe:

Train travel in Belgium and beyond is easy and affordable, with special passes available for different age groups and travel needs:

**Youth Multi**: 10 second-class trips for travellers under 26 (64, or 62 euros via the app).

**Standard Multi (Rail Pass)**: Similar to Youth Multi, but for all ages (105, or 102 euros via the app).

High-speed trains:

- **Eurostar**: Connects Brussels, Antwerp and Liège to Paris, Amsterdam, London, Lille and many more: [b-europe.com/EN/Trains/Eurostar](https://b-europe.com/EN/Trains/Eurostar).
- **TGV**: Fast trains to France.

For more details on Belgian train travel, visit [belgiantrain.be/en](https://belgiantrain.be/en).

a green cross;  
the name of the  
window of each  
addresses online:



The name of the local **bus** company is "De Lijn". Bus numbers BP, 44/45/20b/20a/36a take you from Hasselt railway station to Hasselt Campus in 10 minutes.

Bus numbers 44/45/20a/20b/36a take you from Hasselt railway station to Diepenbeek Campus in 20 minutes. More information on bus services can be found on the website [delijn.be](https://delijn.be) and the app de lijn.

Do you only use the bus between Hasselt and Diepenbeek? Then the best option for you is to buy the campuspas. For only 20 euros per year, you can use the bus between Hasselt and Diepenbeek unlimited. Check beforehand if your bus stop lies within the radius of the campuspas. The campuspas is valid from September 15 until September 14 the next year. Apply for a campuspas via the QR code.



Pay attention to the direction in which the buses go. This is shown at the front of the bus outside. Do not forget to push the blue button on the bus to indicate that you want to get off.

Bus tickets are sold in the bookshop at Diepenbeek Campus. Do not take public transport without a valid ticket.



Hasselt University offers the option to rent a bike. You can go directly to VEDO to arrange your rental.

**VEDO Hasselt University campus Diepenbeek, Agoralaan, Building D**

mo/wed/thu: 8u30 – 16u00

tue: 8u30-17u00

fri: 8u30-12u00

**VEDO Hogeschool PXL Campus Elfde Linie, Elfde Liniestraat, building F**

tue: 9u30-17u00

thu: 9u30-16u00

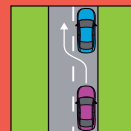
For questions you can always reach out to Vedo by phone (011 26 80 69 or 0472 04 12 80 (mobile)) or email: [VEDOfiets@uhasselt.be](mailto:VEDOfiets@uhasselt.be).

More information and options for public transport check our website:

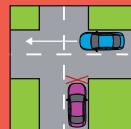


*Check our transport page here*

## Traffic rules in Belgium:



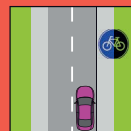
Drive on the right,  
overtake on the left.



Priority is given to the right;  
drivers must stop for traffic  
joining from the right.



Drinking and driving is  
prohibited, for cyclists too.



Cycling on the cycle track  
is mandatory.



Use lights if you are  
cycling at night.



Taking passengers on your  
bicycle carrier is strictly  
prohibited.

Want to earn some extra money?

## Student jobs

**EEA students** are allowed to work without restrictions up to a certain number of hours.

**NON -EEA students** can work max 20 hrs/week during the academic year (unlimited in holidays). A type C work permit is required from the town hall. No work is permitted before the start of the academic year in which you are enrolled.

The job service of UHasselt uses a platform to communicate about the available internal and external student jobs and summer jobs. This platform is called Jobteaser Career Center. Register yourself with your student mail to get access to this exclusive platform.. Jobs in English are tagged accordingly.



PhD students are not permitted to take on student jobs at Hasselt University. However, it is possible for some PhD students to take on a student job externally. Scan the QR code for more information.



You can find a student job  
via interim offices such  
as: Synergie interim, Itzu,  
Konvert







## Language courses

Hasselt University offers free Dutch & English language courses. All information can be found on [uhasselt.be/languagecourses](https://uhasselt.be/languagecourses)

For more information about integration in Flanders, please contact the Flemish government's 'Agentschap Integratie en Inburgering'. You can reach out to [kristel.nowak@integratie-inburgering.be](mailto:kristel.nowak@integratie-inburgering.be) or visit their website.

As a (PhD)student you can visit the following website for information on various language courses.



## Taxes

### TAXES IN BELGIUM

All guests, staying in Belgium for more than 3 months, are considered as 'Resident in Belgium' and will therefore receive several official letters and invoices related to various taxes:

#### PROVINCE TAX:

A fee of 35 euros must be paid by everyone living in the province of Limburg. If you have the so-called 'VT status' from your health insurance fund (indicating little or no income), you can apply for a 50% reduction. To do so, place a personal sticker from your health insurance fund on the invoice and return it to the sender. You will then receive a new invoice for 17.5 euros.

#### WASTE TAX:

This invoice, sent yearly by a company called 'limburg.net', asks you to pay for waste collection. However if you already pay a similar fee, directly to your landlord, you can inform the company about this.



### GENERAL INCOME TAX

In May/June you might receive a 'brown envelope', containing your tax declaration in Belgium and an extra envelope. It's also possible you don't receive an envelope, then you have to go to [www.minfin.fgov.be/myminfin-web/pages/public](http://www.minfin.fgov.be/myminfin-web/pages/public) and enter your taxes digitally.

For students who had no Belgian income at all in the previous year:

- First go to 'My student file' and print a copy of your 'Proof of enrollment' at Hasselt University.
- Then take the red form in the envelop, go to the last page and look for the word 'Datum' on the bottom of the page, fill in the current date and sign the document at 'Handtekening'.
- Put this red form along with your 'Proof of enrollment' in the extra envelope and send it by mail to the address mentioned in 'Ledeberg'. If you fail to do so you could get a fine!

For those who had a Belgian income in the previous year, please consult the website [fin.belgium.be/en/private-individuals/tax-return/tax-submission/tax-return](http://fin.belgium.be/en/private-individuals/tax-return/tax-submission/tax-return) or contact the number 02 572 57 57.

## Public holidays in Belgium

Planning your time in Belgium? Stay informed about the official public holidays to help you schedule work, travel or leisure activities. For a complete list of national and regional holidays, visit: [publicholidays.be/2025-dates/](http://publicholidays.be/2025-dates/).



The general income tax  
must be submitted by June  
29th, 2026!





# **Academic support**



Do you need advice or help? If you are looking for information or a listening ear, we are ready to help you. Contact us and we will be happy to help you.

## Student point

(only students)

Do you have a question but aren't sure who to contact? You can visit Student point in Campus Hasselt or Diepenbeek or send an email to [studentpoint@uhasselt.be](mailto:studentpoint@uhasselt.be).



## Academic advisors

(only students)

If you have questions about your programme, curriculum, regulations, exams, study progress or modifying your study plan, your academic advisor is here to help. They can also assist with exemption applications and any other academic concerns.



## Faculty coordinators internationalisation

(exclusively for students)

If you are an exchange student and have questions concerning your choice of subjects, exam schedules or other academic matters, please contact your faculty coordinator internationalisation.



## Study coaches

(only students)

Do you have questions or doubts about your study method or planning? Do you experience stress, procrastination, lack of concentration or fear of failure? If so, you can contact the study coach of your programme.

[studycoaching@uhasselt.be](mailto:studycoaching@uhasselt.be)



## Student psychologists

(only students)

You can turn to the student psychologist for support and assistance with all sorts of personal, relational, family and other problems. The psychologist can also refer you to more specialized support if needed.

[studentenpsycholoog@uhasselt.be](mailto:studentenpsycholoog@uhasselt.be)



## Reasonable facilities

(only master students)

Are you diagnosed with dyslexia, AD(H)D, ASD, a chronic health condition or another disability?

Do you combine your studies with top-level sports, a job, family responsibilities or other commitments?

In that case, you can request reasonable facilities in educational activities and/or exams via your student portal.

[faciliteiten@uhasselt.be](mailto:faciliteiten@uhasselt.be)



## For PhD students:

Are you already on your doctoral path at Hasselt University or are you exploring the idea of pursuing a PhD, discover financing options and other essential details for current and future PhD candidates on our webpage: [uhasselt.be/en/research/phd](https://uhasselt.be/en/research/phd).



If you already have specific PhD-related questions, please contact the following services:

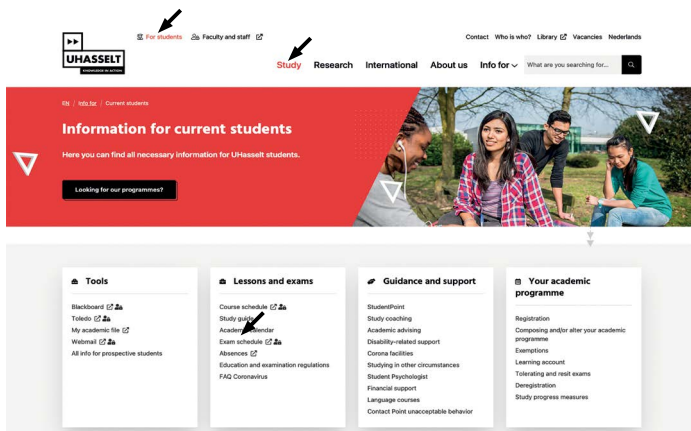
- Practical issues with respect to doctoral school courses (cancellation, problems with registration, ...): [doctoralschools@uhasselt.be](mailto:doctoralschools@uhasselt.be) or consult the webpage: [uhasselt.be/en/doctoral-schools](https://uhasselt.be/en/doctoral-schools)
- PhD regulations & procedures: [phd@uhasselt.be](mailto:phd@uhasselt.be)
- Joint PhDs: [jointphd@uhasselt.be](mailto:jointphd@uhasselt.be)
- Wellbeing: [intranet.uhasselt.be/en/well-being/mental-well-being/mental-well-being-who-to-turn-to-for-support](https://intranet.uhasselt.be/en/well-being/mental-well-being/mental-well-being-who-to-turn-to-for-support)
- Ombudsdienst: [phd-ombuds@uhasselt.be](mailto:phd-ombuds@uhasselt.be)

Pursuing a PhD is demanding, which is why UHasselt's Doctoral Schools invite you to 'PhD Reflect & Connect'—a biannual event combining useful insights with a relaxed reception to help you unwind and connect with fellow researchers. Please keep an eye on our webpage for all future editions: [uhasselt.be/en/doctoral-schools/social-support#anch-785-phd-reflect-connect](https://uhasselt.be/en/doctoral-schools/social-support#anch-785-phd-reflect-connect).

(Exclusively for students)

## Finding information

It all starts with the correct information. A lot of helpful information can be found on our website [www.uhasselt.be/en](http://www.uhasselt.be/en). Check it out!



Click on **'Study'** or **'For Students'** to access everything you need as a student – from your student portal and class schedules to information on housing, campus life, coaching and support, regulations, administration, and more.

In the **study guide** you will find all the information about your programme and courses. For each course you can check the credits, the teaching period, teaching methods, contact persons, a brief description of the content, the learning outcomes, course material, evaluation methods, ...



## Academic calendar

The academic calendar of each programme contains the dates of teaching and examination periods, deadlines for deregistration for course units, days off, holidays, ...



## Course schedule + My timetable

In your course schedule, you can find when and where you have classes. Since course schedules do not always follow a recurrent structure, it is wise to check it daily and weekly for alterations.

Visit "MyTimetable": [mytimetable.uhasselt.be/schedule](http://mytimetable.uhasselt.be/schedule) and take a look at the manual via this QR code.



## Exam schedule

The academic calendar lists when the examination period starts and ends. The detailed exam schedule will be published via your online schedule "MyTimetable" at least four weeks before the start of the examination period at the latest.



Check Blackboard / Toledo at least one day before each lecture, so you can prepare properly for class (e.g. reading assignments, downloading or printing lecture slides, ...).

(Exclusively for master students)

## Academic programme

Upon arrival in Belgium, you finish your official student enrollment at Hasselt University. Make an appointment beforehand. As a final step it is vital that you design your academic programme for the entire upcoming academic year in your student portal. Please do this as soon as possible. Requesting your academic programme is a yearly process. For more information about this, first check our website (see QR code). If you then have any further questions, contact your academic advisor.



After you have requested your academic programme, you can access your course schedule via “MyTimetable” on the website and the electronic learning platform Blackboard/Toledo.

## Blackboard

Blackboard is the virtual learning environment where you find all the information you need about each of your courses (announcements, course information, course material, changes in course schedule, ...)

How to use Blackboard?

- Go to [bb.uhasselt.be](https://bb.uhasselt.be)
- Login with your user-id and password
- You will see an overview of the courses you are registered for, as well as the announcements for each course, lecture slides, extra reading material, ...

You can also download the app if you prefer checking Blackboard on your smartphone.

Note that the Faculty of Engineering Technology students use Toledo instead of Blackboard.

## Student Portal

‘Student Portal’ is the virtual place to find your personal information, download forms and check your exam results.



## Study progress measures

The study progress measures are very important for every student in order to continue with the programme and to proceed to the next academic year.

The study progress measures are based on:

- your study success rate
- the amount of enrollments for a course
- binding conditions
- the balance of your learning account



### Study coaching & study tips:









# Campus life

## Library

As a registered (PhD)student or visitor you are allowed to use the Hasselt University library. More info: [bibliotheek.uhasselt.be/en](http://bibliotheek.uhasselt.be/en)

In order to offer our students and staff members the widest possible range of (electronic) literature, Hasselt University Library collaborates with Hasselt Library Limburg, Maastricht University and KU Leuven.

Just started as a PhD student at Hasselt University? In this practical overview you will find everything you need to know about the library's collections and services.



Library Hasselt Limburg, Dusartplein Martelarenlaan 17B, 3500 Hasselt  
Open mo-sat from 10 am till 18 pm.

## University restaurant

Sandwiches, drinks, sweets, lunches are available in the university restaurants in Diepenbeek and Hasselt. Hasselt University offers students a discount if you pay your meal with your student/staff/visitor card.

When you register your student/staff card on the "Ping Ping website," you can upload money to your card.

Note: Uploading your student card at the machines can only be done with a Belgian bank card.



## Study materials

You can purchase your study materials, courses and textbooks in the campusshop XOD.

The campusshop has two locations:

- At the agora of **Campus Diepenbeek**, (building D) there is an extensive student shop: 011 26 87 24.
- At the panopticum of **Campus Hasselt**, there is a service point for the faculty of law, the school of social sciences and the school of transportation sciences: 011 26 80 65.

As a student, you can find your personal book list in your digital student portal. Online orders can be picked up in the campusshop or delivered to your home for a small fee. You can buy Hasselt University merchandise and stationery at the campusshop.

[campusboekhandel@uhasselt.be](mailto:campusboekhandel@uhasselt.be)

Purchasing used books can be done through re-bookIT. Before purchasing be sure to bring your book list.

[rebookit.be/business-info](http://rebookit.be/business-info)

Each year, the ICT department of UHasselt, offers two types of laptops with an excellent price-quality ratio. UHasselt (PhD)students can also purchase a MacBook at a special discounted rate.

[www.uhasselt.be/laptop-EN](http://www.uhasselt.be/laptop-EN)





## Internet and email

Upon enrollment, you are automatically given a user-ID and a password. You also need those credentials to login to blackboard, the digital learning environment used by Hasselt University (direct access: [bb.uhasselt.be](https://bb.uhasselt.be)).

**Important for phd students:** merge your student and staff email together so you don't miss any communication!

You can find "internet corners" on campus where you can quickly check your email or browse the internet using a desktop computer. In addition, PC rooms are available for individual study or group work. Installing or copying software, as well as using unauthorized programs, is strictly prohibited.

In case of IT related issues scan this QR code.



## Green Office

If you are interested in sustainable activities or if you have questions about this subject, the Green Office is the place to be! We are a team that wants to put sustainability on the map at Hasselt University. We are always looking for new volunteers so feel free to contact us at [greenoffice@uhasselt.be](mailto:greenoffice@uhasselt.be) if you would like to join our team. We are looking forward to meeting you!

[www.uhasselt.be/greenoffice](https://www.uhasselt.be/greenoffice)

## Silence point

In this room on campus Diepenbeek (building D - C50 - C51) and Campus Hasselt (FR 1.06A), you are very welcome to relax and find peace of mind, pray, think or get away from the rush of everyday life.



## International councils

### STUDENTS

The International Council (IC) is a part of StuRa (the Student Council) and focuses specifically on international students. It represents their interests and addresses any concerns they may have during their stay in Belgium.

[stura.international@student.uhasselt.be](mailto:stura.international@student.uhasselt.be)

 International student council of Hasselt university



### PhD STUDENTS

The PhD Council represents and supports PhD students by appointing representatives in key decision-making bodies and committees while addressing their concerns at different university levels. Additionally, it fosters engagement and a sense of community through bi-monthly meetings and social events, ensuring a supportive and inclusive environment for all PhD students.



## Buddy Programme

### STUDENTS

The International Office organises a Buddy Programme that pairs a Hasselt University student living in Belgium with an international student. This programme offers a helping hand as you settle in and supports your integration into university life at Hasselt University.



### PhD STUDENTS

Doing a PhD can be both exciting and challenging, with common struggles and moments of loneliness along the way. To provide support, the Doctoral Schools offer a buddy trajectory specifically targeted at researchers.



## International student unions

Erasmus Student Network (ESN)

[esn@student.uhasselt.be](mailto:esn@student.uhasselt.be)

 [www.facebook.com/esnhasselt](https://www.facebook.com/esnhasselt)

Transportation Sciences Network (TSN)

[www.transportationsciencesnetwork.org/](http://www.transportationsciencesnetwork.org/)

Joint Organization of Statistics Scholars

 'JOSS - Students, Staff and Alumni of Master in Statistics UHasselt'



## Expat centre Limburg

Expat centre Limburg, part of POM Limburg's welcome management, supports international students, researchers, guest professors and professionals living or working in the Belgian province of Limburg—whether for 100 days or for several years.

Working in close complement to Hasselt University's International Office, we focus on life beyond academic and institutional matters. Our first-line support includes one-on-one meetings and practical guidance via our website, helping you settle smoothly into your new surroundings.

From housing and healthcare to social events, integration and navigating the local job market—we're here to help you build a meaningful and sustainable life in Limburg. Want to connect with like-minded people? Join Limburgers Worldwide®, our free, English-language online community for globally minded individuals with a link to Limburg. Stay informed and engaged through curated socio-economic updates, networking opportunities, and international events—both during your time here and beyond.

[www.expatcentrelimburg.com](http://www.expatcentrelimburg.com)

[welcome@pomlimburg.be](mailto:welcome@pomlimburg.be)



## Sports

If you want to practise sports, there are many possibilities. 'Studentensport Limburg' offers an extensive selection of sports to (PhD)students, from ball games to bodyshape workouts, dance classes and combat-centered sports. All these activities are organised on or around the campuses of Hasselt and Diepenbeek.

Discover all sport activities and schedules on the website or in the Studentensport Limburg app.





**Buy a sports card  
for 30 euros and  
enjoy classes free  
of charge, free  
swimming, ...**

#### **SPORTS CARD/APP**

The sports card costs 30 euros and gives you access to all activities of the weekly programme. It gives you free entrance in the swimming pool of Hasselt and Genk, free entrance in the ice rink in Hasselt and also discounts on climbing or padel.

Download the Studentensport Limburg app ([studentensportlimburg.be/en/](https://studentensportlimburg.be/en/)) where you can find the complete offer, buy a digital sports card and subscribe for the activities. To pay for the sports card or for special activities you have to connect your Ping.Ping account with the app. Your Belgian health insurance will (partially) refund the cost of the sports card. Just download the form in the app. If you are a competitive sporter and you want to participate in student competitions contact the sport services. [sport@uhasselt.be](mailto:sport@uhasselt.be)

For PhD students check the website:

[intranet.uhasselt.be/en/well-being/health/exercise-and-sport](https://intranet.uhasselt.be/en/well-being/health/exercise-and-sport)

#### **Sports coordinators:**

Katleen De Wit ([katleen.dewit@uhasselt.be](mailto:katleen.dewit@uhasselt.be))

Martine Libens ([martine.libens@uhasselt.be](mailto:martine.libens@uhasselt.be))

## Cultural activities @Hasselt University

Hasselt University also offers cultural and other activities.

Discover them on [www.uhasselt.be/culture](http://www.uhasselt.be/culture)

Financial allowances for students:

- **Cashback culture:** Receive a 50% discount on top of the student rate on performances in the cultural centers in Flanders, the Nieuwstedelijk, Cinema Zed and Bootstraat Hasselt. You can also use the cashback culture for a Museumpass or museum tickets.
- **Cheap tickets for performances at CCHA:** You can buy a ticket for all performances at the cultural centre of Hasselt at 50% discount upon presentation of your student card. Afterwards, you can also apply for the cashback culture.
- **Projectgrant (not for PhD students):** Would you like to organise a nice activity yourself? A cooking workshop, comedy, free-podium,...? Apply for our projectgrant and receive up to 300 euros for your activity!

Check the regulations in your student portal.

### MUSEUMPASS

Get your Museumpass with a 50% discount and visit more than 200 museums in Belgium! You can now also request a 50% discount on individual museum tickets.

You can submit your reimbursement request in your student portal.











# Useful addresses & translations

## Useful addresses

### Groceries

You can do groceries in for example:

- LIDL
- ALDI
- Carrefour
- SPAR
- Delhaize
- Action is a good shop for all kinds of cheap non food items

### Laundry

#### Hasselt:

- Waschsalon Speed Queen, Diesterstraat 22
- Bubbleworks Easy Hasselt, Kolonel dusartplein 4
- Wasbar, Grote Markt

#### Diepenbeek:

- Wassalon Laundry, Dorpsstraat 4
- Mr. EcoWash, Nieuwstraat 167
- Wassalon Prima Wash, Nierstraat 28

### Copy services

#### Hasselt:

- Drukpunt Koning, Boudewijnlaan 4
- Druk & Copyservice, Bampslaan 10

### Places of worship

#### Catholic churches

##### Diepenbeek:

- H.Hart Church: Patersplein Rooierheide Diepenbeek

##### Hasselt:

- Cathedral: Vismarkt w/n
- Church Godsheide: Kiezelstraat w/n
- Church Sint-Katarinawijk: Sint-Katarinaplein w/n

#### Protestant churches

##### Hasselt:

- United protestant church: Kuringersteenweg 81

#### Evangelical churches

##### Hasselt:

- Evangelical community "De Zaaier": Runkstersteenweg 303

##### Diepenbeek:

- Evangelical community Diepenbeek: Begoniastraat 9

#### Orthodox churches

##### Genk:

- Greek orthodox church: G.A. Galopinstraat 21
- Ukranian orthodox church: Hulshagenstraat w/n

#### Mosques

##### Hasselt:

- Badr Mosque: Mouterijstraat w/n





### Places of worship

*Jewish synagogues*

**Antwerp:**

- Synagogue Shomré Hadass: Terliitstraat 35

**Brussels:**

- The great synagogue: Regentschapsstraat

*Buddhist stupa*

**Schoten:**

- Buddhist stupa: Kruispadstraat 33

*Pentacosta church*

- Wimmertingenstraat 5, 3501 Hasselt

### Embassies

A list of foreign embassies in Belgium can be found via this QR code.



### Police

Local police Limburg Hoofdstad (LRH)  
Zwarte-brugstraat 6, Hasselt





## Useful translations

ENGLISH - DUTCH

### HEALTH

General doctor - Geneesheer / arts  
Pharmacist - Apotheker  
Dentist - Tandarts  
Physiotherapist - Kinesist  
Insurance - Verzekering

### NUMBERS

one - één  
two - twee  
three - drie  
four - vier  
five - vijf  
six - zes  
seven - zeven  
eight - acht  
nine - negen  
ten - tien

### AVAILABILITY

Open - Open  
Closed - Gesloten  
Before noon/morning (am) - Voormiddag (vm)  
Afternoon (pm) - Namiddag (nm)  
Holiday - Verlof/vakantie

### DAYS OF THE WEEK

Monday (Mon) - Maandag (Ma)  
Tuesday (Tues) - Dinsdag (Di)  
Wednesday (Weds) - Woensdag (Wo)  
Thursday (Thurs) - Donderdag (Do)  
Friday (Fri) - Vrijdag (Vr)  
Saturday (Sat) - Zaterdag (Za)  
Sunday (Sun) - Zondag (Zo)

### ACCOMMODATION

For rent - Te huur  
For sale - Te koop

### GENERAL EXPRESSIONS

How much does this cost? - Hoeveel kost dit?  
Where is the bus stop? - Waar is de bushalte?  
What do you call this? - Hoe heet dit?  
Where can I find a doctor? -  
Waar vind ik een dokter?  
Thank you - Dank u / Bedankt  
Here you are - Alstublieft  
Hello - Goedendag  
See you/goodbye - Tot ziens

### FOOD, BEVERAGES AND OTHER NECESSITIES

Beer - Bier  
Bread - Brood  
Milk - Melk  
Coffee - Koffie  
Cheese - Kaas  
Ham - Hesp  
Eggs - Eieren  
Washing powder/detergent -  
Waspoeder  
Blanket - Deken  
Pillow - Kussen  
Sheet - Laken  
Mattress cover - Matrasbeschermer  
Duvet - Dekbed  
Towel - Handdoek  
Kitchen towel - Keukenhanddoek





Campus Hasselt | Martelarenlaan 42 | BE 3500 Hasselt  
Campus Diepenbeek | Agoralaan Gebouw D | BE 3590 Diepenbeek  
**[www.uhasselt.be/en](http://www.uhasselt.be/en)**