

2024-2025

Welcome Guide

UHASSELT



UHASSELT

KNOWLEDGE IN ACTION

In case of emergency...

European international
emergency number

112

police
emergencies

101

other calls
011 93 89 38
for Hasselt and Diepenbeek

ambulance &
fire department

100

other calls
011 24 88 88



Welcome to Hasselt University **5**

- Belgium 6
- Climate 6
- Language 6
- Hasselt 6
- Hasselt University 7
- Map campus Diepenbeek 8
- Map campus Hasselt and Witte Kazerne 9

Pre-arrival information **11**

- Study fees 12
- Accommodation 12
- Opening a bank account 13
- Cash 13
- Useful contacts at our university 14

Upon arrival **17**

- Administrative formalities 18
- Language courses 20
- Mobile phones 20
- Health insurance - Health care 20

Living in Belgium **23**

- Traveling in Belgium and Europe 24
- Traffic Rules 27
- Student jobs 27
- Taxes 30

Academic support **33**

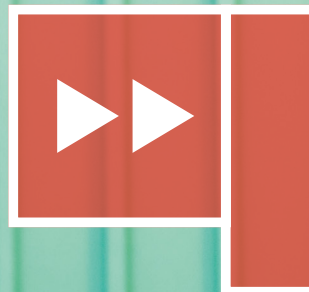
- Student Point 34
- Academic advisors 34
- Faculty coordinators 34

- Study coaches 35
- Student psychologists 35
- Reasonable facilities 35
- Finding information 36
- Academic calendar 36
- Course schedule + my timetable 36
- Exam schedule 36
- Academic programme 37
- Blackboard 37
- My academic file 37
- Study progress measures 37
- Educational methods and learning 38
- Evaluation 39

Student services & student life **41**

- Library 42
- University restaurant 42
- Study materials 42
- Internet and Email 43
- Green Office 43
- Silence point 43
- The International Council 44
- Buddy programme 44
- Expat centre 44
- Limburgers Worldwide 44
- Enactus 45
- International student unions 45
- Sports 46
- Culture 48

Useful addresses & translations **51**



Welcome to Hasselt University

Dear student,
Dear guest,

We are delighted that you are planning a stay at our university and we are looking forward to welcoming you in Hasselt soon.

Hasselt University is a young and dynamic university and is located on two campuses; a city campus right in the centre of Hasselt and a campus in a green environment, just outside the city of Hasselt (in Diepenbeek). The Netherlands, Germany and the French speaking part of Belgium (Wallonia) are all nearby.

While preparing for your stay, the questions and practicalities you face may seem endless. This Hasselt University Welcome Guide answers the practical questions about your arrival and about living and studying in Belgium and Hasselt. Should you have further questions about your stay after reading this guide, please do not hesitate to reach out.

See you soon!

International Office
Tel: +32 11 26 81 76

www.uhasselt.be/en/international
www.facebook.com/hasseltuniversity

Belgium

The kingdom of Belgium is one of the smallest countries in Europe and has a population of 11,7 million people. It is located in the center of Europe. The capital is Brussels. Belgium may be small, but there are plenty of things to see and do; historic cities, fine restaurants, hiking trails,...



Climate

Belgium has a temperate climate characterized by moderate winters and pleasant summers. The weather is often unpredictable though and visitors can expect a downpour any time of the year. On average the warmest months are July and August. Winters can be cold, snow is possible, but not frequent.

Language

Belgium's system of government is a tangled web consisting of six governments and six parliaments. The most important thing to remember is that Belgium has three official languages: Dutch, French and German. The cities Hasselt and Diepenbeek are located in the Dutch (or Flemish) speaking part of the country. French is the dominant language in the southern part of Belgium, and there is a small region in the east of the country where people speak German. But don't worry, most Belgians generally have a good knowledge of different languages, including English.

Hasselt

Hasselt is the capital of the Belgium province of Limburg and counts 79,000 inhabitants. It is a city filled with charm and opportunities. Hasselt welcomes more than 2,000 international students, guests and researchers from all over the world every year. Hasselt is often linked to jenever, the juniper-flavored national and traditional liquor, and speculaas, a typical spiced almond biscuit. Besides, the city is known for its hospitality, excellent restaurants, cosy terraces and bars. There is a large cinema complex (Kinepolis). For theatre, literature, contemporary dance and classical music you can visit the cultural centre, CCHA. The Japanese garden, the nature preserve Kiewit and the domain of Bokrijk are a real treat for nature lovers. In Diepenbeek, student associations organise plenty of activities and parties for students. The Erasmus Student Network (ESN) is also represented at Hasselt University.

More information: visithasselt.be/en

Hasselt University

Hasselt University is situated in the heart of Europe, within a stone's throw of cities such as Brussels, Liège (in the French-speaking part of Belgium), Aachen (Germany) and Maastricht (the Netherlands).

As civic university, we assume our responsibility, commit ourselves and share our knowledge in ways that benefit society. Strong public engagement was, is and always will be at the core of who we are and what we do. Current and future challenges guide our teaching, research and social engagement. Innovation is a constant in everything we do. Hasselt University is ranked amongst the best institutions worldwide in U-Multirank 2020 (an online tool designed with seed funding of the European Commission). Furthermore, Hasselt University is ranked in the top 350 of the Times Higher Education World University Ranking, as well as 53rd in the Times Higher Education Ranking of universities less than half a century old.

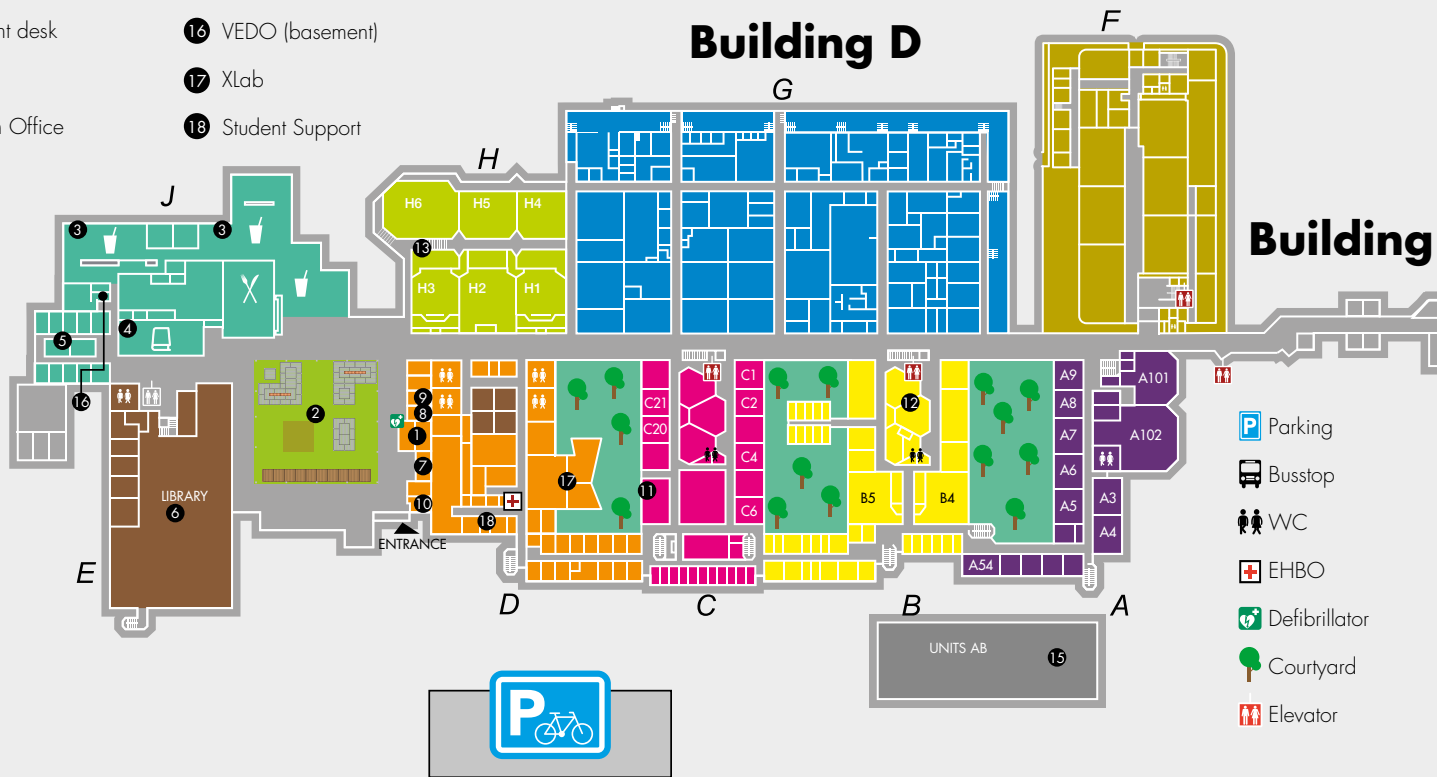
Approximately 7,065 students and 1,700 staff members are connected to Hasselt University. Hasselt University offers attractive undergraduate, graduate and PhD programmes in its seven faculties (Faculty of Business Economics, Faculty of Sciences, Faculty of Medicine and Life Sciences, Faculty of Law, Faculty of Architecture and Arts, Faculty of Engineering Technology, Faculty of Rehabilitation Sciences) and its School of Transportation Sciences, School for Educational Studies and School of Social Sciences.



- 1 Reception
- 2 Agora
- 3 Cafeteria
- 4 Bookshop
- 5 Student clubs / STURA
- 6 Library
- 7 Student desk
- 8 Sport
- 9 Green Office
- 10 Student Point
- 11 Helpdesk
- 12 LOA
- 13 Agora Architecture building
- 14 Cafeteria Architecture building
- 15 Units AB
- 16 VEDO (basement)
- 17 XLab
- 18 Student Support

CAMPUS DIEPENBEEK

Gebouw D, Agoralaan, 3590 Diepenbeek

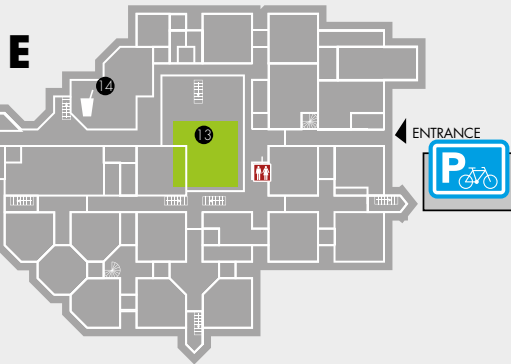




WITTE KAZERNE

Maastrichterstraat 100, 3500 Hasselt

ENTRANCE →



CAMPUS HASSELT

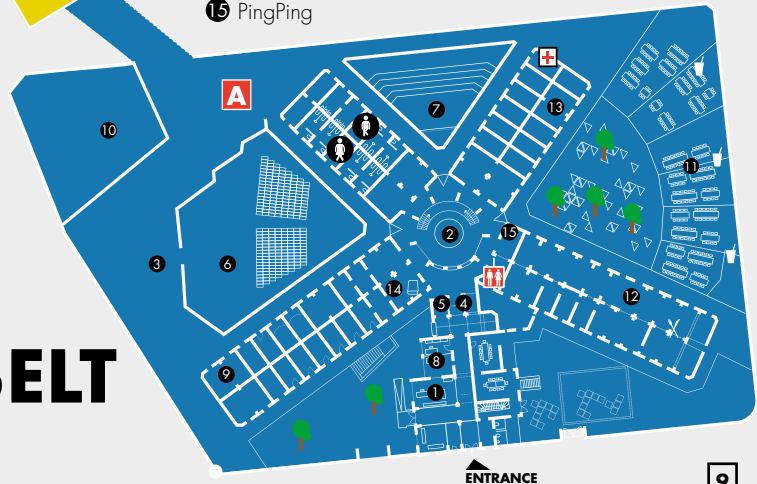
Martelarenlaan 42, 3500 Hasselt

A OLD PRISON

- ① Reception
- ② Panopticum
- ③ Foyer
- ④ Student support department (1st floor)
- ⑤ Student facilities department (1st floor)
- ⑥ Aula Louis Verhaegen - Auditorium 1
- ⑦ Aula Louis Roppe - Auditorium 2
- ⑧ Open universiteit
- ⑨ Helpdesk
- ⑩ Outside auditorium
- ⑪ Cafeteria
- ⑫ Restaurant
- ⑬ STURA
- ⑭ Bookshop
- ⑮ PingPing

B LAW BUILDING

Finance department
ISA/WEB
Faculty of Law
Classrooms





NEW YORK

HARRAT

Verboden
and to be used



Pre-arrival information

Study fees

As a student at UHasselt, you pay study fees each academic year (this does not apply to exchange students). This tuition fee consists of a fixed part and a variable part per credits taken.

www.uhasselt.be/en/study/application-and-admission/tuition-fees.

Accommodation

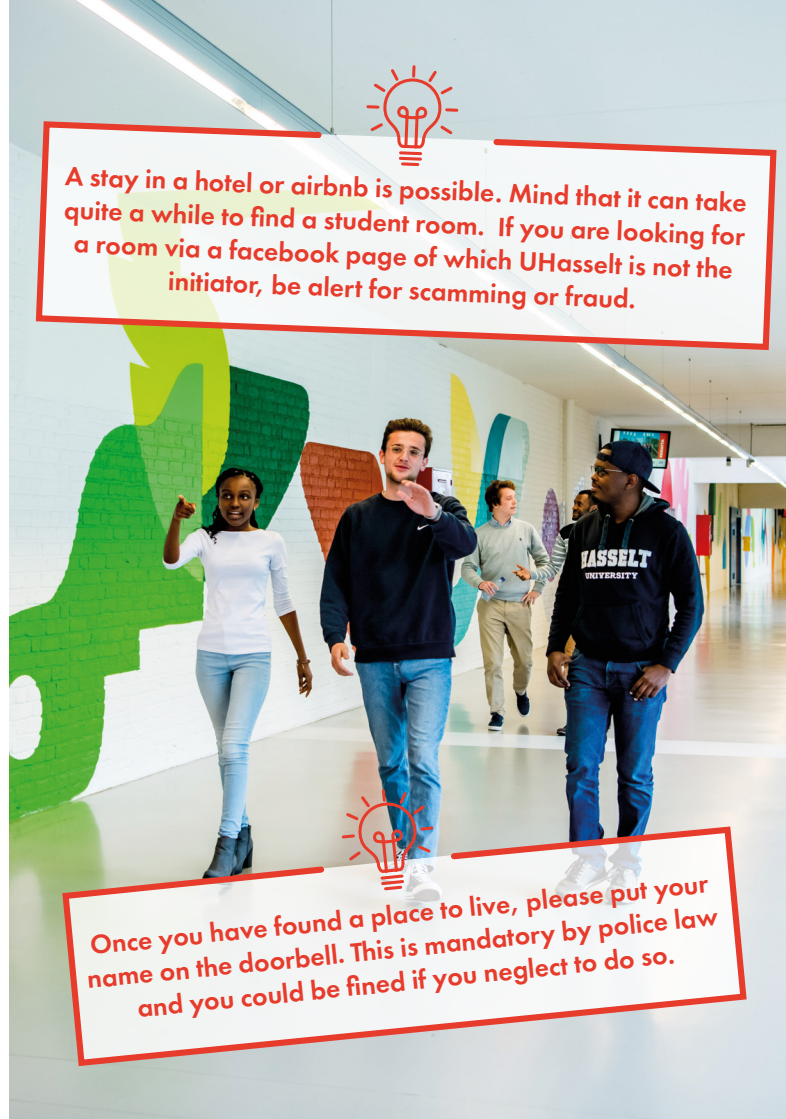
If you are looking for a student room, check out available rooms via kotatlimburg.be

More info and help: housing@uhasselt.be

If you prefer to look for a room once you are in Belgium, you can also choose to stay several days or more in the Hostel H in Hasselt and look for the best place with your own eyes! The hostel is perfectly located, close to Hasselt railway station and within walking distance of Hasselt city centre. It is a building with a young, modern look where you can spend some time exploring and strolling around Hasselt while looking for your new home.

If you are PRE-registered at Hasselt University you can even stay there at the 'Members Rate' which will give you a 10% discount. Just ask for it when making the reservation.

www.jeugdherbergen.be/en/hasselt



A stay in a hotel or airbnb is possible. Mind that it can take quite a while to find a student room. If you are looking for a room via a facebook page of which UHasselt is not the initiator, be alert for scamming or fraud.

Once you have found a place to live, please put your name on the doorbell. This is mandatory by police law and you could be fined if you neglect to do so.

Opening a bank account

It is safer to deposit your money in a bank rather than leaving large amounts of cash in your room or walking around with it.

In order to speed up the opening of a Belgian bank account we hereby provide you with some more information to open a bank account remotely at KBC.

You will have to enter some personal data, as well as upload some documents:

- A clear photo or copy of your identity card or passport
- Proof of your current domicile address (e.g., a declaration from your local authority or a copy of a utilities bill). Please make sure that this document bears a signature and date
- Proof of your future school or place of work (this could be your acceptance letter from UHasselt)

Upon your arrival, you just have to turn in one more document which you receive after registration at the town hall (this procedure can also be done remotely, more info will follow).

If you choose to open a bank account in Belgium you will need the following documents:

- a valid passport or identity card, proof of enrolment at Hasselt University;
- a copy of your rental contract;
- registration at town hall

A current account provides you with a cash card for 24-hour cash dispensers.

You can also look into online banks such as revolut: www.revolut.com

Cash

To withdraw cash you have to go to cashpoints. find more info here:
www.bancontact.cash/en/how-use-cash-point



Addresses:

- BNP Paribas Fortis, Ridder Portmansstraat 1, Hasselt
- KBC, Gouverneur Verwilghensingel 102, Hasselt (especially for non-EU students)
- Belfius, Havermarkt 36, Hasselt
- Crelan, Stadsomvaart 1, Hasselt
- ING, welvaartstraat1, Hasselt, Hasselt
- ING, marktplein 11, 3590 Diepenbeek
- BNP Paribas Fortis, Marktplein 18, Diepenbeek
- KBC, Kapelstraat 36, Diepenbeek
- Belfius, Dorpsstraat 24, Diepenbeek
- Crelan, Varkensmarkt 10 B11, Diepenbeek

Useful contacts at our university



SUPPORT INTERNATIONAL STUDENTS AND STAFF

Stefanie Commeene
[stefanie.commeene](mailto:stefanie.commeene@uhasselt.be)
[@uhasselt.be](mailto:stefanie.commeene@uhasselt.be)



ADMISSION AND ADMINISTRATION EXCHANGE STUDENTS

Erika Vandersmissen
[erika.vandersmissen](mailto:erika.vandersmissen@uhasselt.be)
[@uhasselt.be](mailto:erika.vandersmissen@uhasselt.be)



ADMISSION AND ADMINISTRATION INTERNATIONAL STUDENTS

Leen Jorissen
leen.jorissen@uhasselt.be







Upon arrival

Administrative formalities

Registration at Hasselt University

You are required to register as a (exchange) student or visitor at the Student Administration (Martelarenlaan 42, 3500 Hasselt) in order to get your student/staff/visitor card. This card allows you to make use of the UHasselt facilities and infrastructure such as the library, bike rent, university restaurants etc.

For more information, please contact the Student Administration:
studentenadministratie@uhasselt.be

Town Hall Diepenbeek:

Dorpsstraat 14
3590 Diepenbeek

For opening hours and appointments call 011 49 18 30
or fill in a contact form on the website



Town Hall Hasselt

Limburgplein 1
3500 Hasselt

For opening hours and appointments call 011 23 90 00
email vreemdelingendienst@uhasselt.be or visit the website.



Town Hall Genk

Stadsplein 1
3600 Genk

For opening hours and appointments call 089 65 36 00
or email info@genk.be

Upon arrival in Belgium, it is important that you make an appointment for final registration. You can make this appointment via our website:

www.uhasselt.be/make-an-appointment

Please note, we can only finalize this registration when your payment for the tuition fee is in order.

You will then receive the forms you need to register at City Hall and to open a Belgian bank account.

REGISTRATION AT THE TOWN HALL

On arrival in Belgium all foreigners staying longer than one month must register at their local town hall **within eight working days.**

	DIEPENBEEK, DORPSTRAAT 11		HASSELT, LIMBURGPLEIN 1	
	AM	PM	AM	PM
Monday	09.00-12.30		09.00-12.30	13.30-17.00*
Tuesday	09.00-12.30	14.00-19.00*	09.00-12.30	13.30-20.00*
Wednesday	09.00-12.30	14.00-16.30*	09.00-12.30	13.30-17.00*
Thursday	09.00-12.30		09.00-12.30	12.30-17.00*
Friday	09.00-12.30		09.00-12.30	

**Every weekday from 9.00 am – 12.30 pm you can enter the Town Hall of Diepenbeek without an appointment... During the opening hours indicated in the afternoon, you can only visit the Town Hall by appointment. For the town hall of Hasselt you always have to make an appointment.*

Both in the town hall of Hasselt and Diepenbeek there's an option to take photographs.

	DOCUMENTS REQUIRED	DOCUMENTS TO RECEIVE
EU citizen < 3 months	<ul style="list-style-type: none"> • passport or identity card • proof of enrolment Hasselt University*** • copy of your rental contract or correct address 	"melding van aanwezigheid" (announcement of presence)
EU citizen > 3 months	<ul style="list-style-type: none"> • passport or identity card • 2 passport photographs • proof of enrolment at Hasselt University • EHI-card or proof of insurance • proof of scholarship or proof of enrolment as Erasmus student or a declaration on honour of proof of solvency is also accepted • copy of your rental contract or correct address • standard form**** 	"verklaring van inschrijving" (statement of registration)
Non-EU citizen < 3 months	<ul style="list-style-type: none"> • passport with visa C (if required) • 2 passport photographs • proof of enrolment at Hasselt University • copy of your rental contract or correct address 	"aankomstverklaring" (statement of arrival) valid for 90 days
Non-EU citizen > 3 months	<ul style="list-style-type: none"> • passport with visa D • 2 passport photographs • proof of enrolment at Hasselt University • proof of scholarship, proof of solvency or proof of guarantee • copy of your rental contract or correct address • standard form**** 	"bewijs inschrijving vreemdelingenregister (BIVR)"* Residence permit: 'A-card'** (A-card approx. 21 euro)

* After registration at the local Town Hall, a police officer will pass by your residence to check that you actually live there before you receive your BIVR. If you are not at home you will receive a letter inviting you to report to the police station of your district.

A-Card: Pls. note the **expiration date on the front of this card; so do not forget to renew it in time !

*** Please ask your proof of enrollment for town hall specifically when you do your final registration at the student administration.

**** You will receive this together with your admission letter. If not please contact admissionformaster@uhasselt.be

Changes/leaving Belgium

- Change of address: notify the Town Hall and alter the address in your academic file.
 - If you leave Belgium, always notify town hall!
 - If you leave Belgium in the middle of your stay/studies notify town hall and the Student Administration: stua@uhasselt.be, your academic advisor (see page 13).
- Exchange students also contact erika.vandersmissen@uhasselt.be

- Renewal of your residence permit: do not forget to go to the Town Hall at least 30 days before the expiration date. Make an appointment and send ALL your documents digitally to vreemdelingendienst@hasselt.be before your appointment. For more information on renewing your residence permit:



Language courses

UHasselt offers free Dutch & English language courses. For more information, please check out the website. www.uhasselt.be/languagecourses

For more information about integration in Flanders please contact the department Integration of the Flemish government "Agentschap Integratie en Inburgering" you can contact kristel.nowak@integratie-inburgering.be or visit the website.



Mobile phones

If you wish to use a mobile phone in Belgium you should be aware that there are a few major competing networks:

- proximus: www.proximus.be
- base: www.base.be
- mobile vikings: www.mobilevikings.com
- orange: www.orange.be
- telenet: www.telenet.be
- lycamobile: www.lycamobile.be/en/

You can buy a SIM card with a local number and top up your phone balance in the arrival hall of Brussels Airport, many other telecomshops or through their website.

Health insurance – Health care

Health insurance

Individual health insurance is compulsory in Belgium.

If you are from an EEA country you are insured through your own national health service by the European Health insurance card (EHIC). This card covers expenses in the event of illness abroad, and is valid for a maximum of one year.

When you see a doctor or a specialist, you will be given a "certificate of services provided". In some cases, the pharmacist provides you with a document for refund purposes (certificate model 704). Bring these certificates, together with your EHIC-card to the mutuality office. We recommend that you also acquire travel insurance.

However, if you are from a non-EEA country, you have to take out an insurance in an all-inclusive insurance, called AON. If you are staying longer than 3 months you should also subscribe to the health insurance fund CM (Christelijke Mutualiteit) or 'De Voorzorg'. This can be done during the Orientation Program in September or by going to their office in Diepenbeek.

Didier Verding Kerklaan 6 bus 1, Diepenbeek

Vismarkt 11, Hasselt

Prins-Bisschopssingel 75, Hasselt

PAY ATTENTION!

Civil liability: This is if you intentionally or even mistakenly injure someone or damage someone's property. If Medical and hospital costs ensue, these are not or only partly covered in the mandatory health insurance. A lot of students are not aware of this and it can have big financial implications!

This can be solved by taking the AON student insurance mentioned on our website.



Flemish Social Protection Programme

This is a compulsory insurance for everyone living in Flanders, starting from the year you turn 26. For more information

www.vlaanderen.be/en/joining-the-flemish-social-protection
tel 02 553 46 90

Health Care

Always visit a general practitioner, never go to the hospital directly, unless it is an emergency.

To see a general practitioner you have to make an appointment. Always take your EHI or ID card with you to the doctor or the hospital.

Doctors:

- Huisartsen De Demer, Stationsstraat 28, 3590 Diepenbeek 011 24 70 00
- Huisartsen De Steen, Steenweg 172, 3590 Diepenbeek 011 32 30 01
- Huisartsen Hygeia, Kramerslaan 9 bus 4, 3500 Hasselt 011 27 83 80

Or visit the website mediwacht.be

Dentists:

- Dentist Luc Cosemans, Ganzebroekstraat 10, Diepenbeek, 011 32 18 01
- Dentist Chris Kruijnen, Marktplaats 38, Diepenbeek, 011 32 13 83
- Dentist-centre CMT, Luikersteenweg 232 b2, Hasselt, 011 28 45 45
- Dentist-centre Molaar, Maastrichtersteenweg 198/1, Hasselt, 011 76 28 68

Eye doctor:

- Dr. K. Noben, Stationsstraat 88, Diepenbeek, 011 33 11 22
- Oogcentrum Hasselt, Sint truidstersteenweg 281, Hasselt, 011 23 33 91

Gynaecologist

- Gynaecologiepraktijk Hasselt, Toekomststraat 10, 3500 Hasselt, 011 22 89 03
- ZOL Genk, zol.be/raadplegingen/gynaecologie-verloskunde-fertiliteit

Hospitals:

- Virga Jesse Campus, Stadsomvaart 11, Hasselt, 011 33 55 11
- Salvator Campus, Salvatorstraat 20, Hasselt, 011 28 91 11

Urgent medical assistance:

- 112 (= international emergency number)

Medical assistance at night and during the weekend:

- Doctor: one central number: 011 33 65 33

Detox centre: (for all kinds of intoxication) +32 70 245 245
you can also search for a doctor here: ikzoekeenhuisarts.be/





Living in Belgium

Traveling in Belgium and Europe

Documents required

For a citizen of a country belonging to the EEA (+ Switzerland and Monaco), a national identity card is all you need to travel from one European Union country to another. No passport or visa is required.

Citizens of all non-EEA countries must have a passport with the appropriate visa.

The type C or Schengen visa is for stays shorter than 3 months and allows you to enter Belgium. It also entitles you to travel through a part of Europe, namely the "Schengen area".

The following countries are members of the Schengen area: *Austria, Belgium, Czech Republic, Denmark, Estonia, Finland, France, Germany, Greece, Hungary, Iceland, Italy, Latvia, Liechtenstein, Lithuania, Luxembourg, Malta, the Netherlands, Norway, Poland, Portugal, Slovakia, Slovenia, Spain, Sweden and Switzerland.*

The UK is not a member country of the Schengen Area.

For stays longer than 3 months, you will need a visa type D or Authorisation for Provisional Sojourn (also referred to as the "Student Visa"). This applies to all international students who do not belong to the EEA area, Switzerland or Monaco.

When travelling, always take your international passport and residence permit with you, even when visiting a nearby city like Maastricht (The Netherlands).



The Belgian **railway** offers various cut-price formulas to travel in Belgium and Europe. You can find more information on the website belgiantrain.be/en or at the railway station. Here are some of the most commonly used:

Youth Multi (Go Pass 10): if you are under 26 years of age, your go-pass entitles you and your friends (under 26) to 10 second class single trip between two Belgian stations. The go-pass is valid for 1 year and costs 62 euros (60 euros if you buy it via the app).

Standard Multi (Rail Pass): similar to the go-pass, but without an age limit, it costs 102 euros (99 euros if you buy it via the app).

You can also travel by the high-speed Thalys train from Brussels, Antwerp or Liège to a lot of big cities such as Paris, Amsterdam, Rotterdam, Schiphol, Den Haag, Aachen, Köln and many more (thalys.com). Another option is the Eurostar train from Brussels to London, Paris, Lille and Amsterdam (eurostar.be) or the TGV to go to France.





The name of the local **bus** company is "De Lijn". Bus numbers BP, 44-45-20b-20a-36a take you from Hasselt railway station to Hasselt Campus in 10 minutes.

Bus numbers 44-45-20a-20b-36a take you from Hasselt railway station to Diepenbeek Campus in 20 minutes. More information on bus services can be found on the website delijn.be and the app de lijn.

Do you only use the bus in Hasselt and Diepenbeek? Then the best option for you is to buy the campuspas. For only 20 euros per year, you can use the bus in Hasselt and Diepenbeek unlimited. Check beforehand if your bus stop lies within the radius of the campuspas. The campuspas is valid from September 15 until September 14 the next year. Apply for a campuspas via the QR code.



Pay attention to the direction in which the buses go. This is shown at the front of the bus outside. Do not forget to push the blue button on the bus to indicate that you will get off.

Bus tickets are sold in the bookshop at Diepenbeek Campus. Do not take public transport without a valid ticket.



Hasselt University gives you the option of hiring a **bike** for 25 euros per year after paying a warranty of 70 euros. You can go directly to vedo to rent a bike:

VEDO UHasselt campus Diepenbeek, Agoralaan / gebouw D

ma/woe/do: 8u30 – 16u00

di: 8u30-17u00

vr: 8u30-12u00

VEDO Hogeschool PXL Campus Elfde Linie, Elfde Liniestraat, Gebouw F

di: 9u30-17u00

do: 9u30-16u00

For questions you can always reach out to Vedo by telephone or email:
VEDOfiets@uhasselt.be 011 26 80 69 - 0472 04 12 80 (gsm)



Belgium has a number of commercial **airports**, but the two major international airports are Brussels Airport ("Brussels Nationaal") in Zaventem and Charleroi Airport ("Brussels South") in Charleroi. Furthermore, Maastricht Airport and Eindhoven, both in the Netherlands, are also very near.

Please note that every passenger travelling by train to or from Brussels National Airport has to pay a "Diabolo fee" on top of their ticket price. Please consult the website of NMBS for further information.



When you arrive at Hasselt station, there are **taxicabs** ready to drive people around. You may need one if you are not sure about your destination or if you don't want to walk home. You can check for more information the following links:

www.wave-a-cab.be/en/waver

www.taxihtm.be/

www.hasseltse-taxi.com/EN/taxi

De Lijn's Kothopper (line 363) will take you to your dorm every Sunday evening (6.30 pm - 0.30 am). You can use the campus pass or your bus subscription as proof of transport.

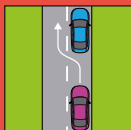
Are you an international student or an erasmus student at UHasselt arriving for the first time? UHasselt wants to make your first trip to your student room/lodging as smooth as possible. We refund part of the price of your taxi from Hasselt station or an airport in Belgium. Search for Taxi refund on the UHasselt website.

More information on contributions and options for public transport check our website.

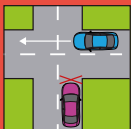


Check our transport page here

Traffic rules



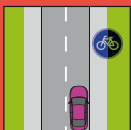
Drive on the right,
overtake on the left.



Priority is given to the right;
drivers must stop for traffic
joining from the right.



Drinking and driving is
prohibited, for cyclists too.



Cycling on the cycle track
is mandatory.



Use lights if you are
cycling at night.



Taking passengers on your
bicycle carrier is strictly
prohibited.

Student jobs

While you are studying (bachelor or master level) at Hasselt University, you may want to combine your studies with a (part-time) job. As a student, you are allowed to work 600 hours per calendar year. The maximum number of hours you can work as a non-EU member is 20 hours per week, except during school holidays.

If you come from a EEA country, you are free to start looking for a job in the area. However, as a non-EU member who wants to work during the academic year, you should apply for a 'work permit, type C' at the local city hall.

Students who arrive in Belgium during the summer preceding the academic year in which they are registering are not allowed to work during that period.

The job service of UHasselt uses a platform to communicate about the available internal and external student jobs and summer jobs. This platform is called Jobteaser Career Center.

Register yourself with your student mail to get access to this exclusive platform. When your profile is completed, you can apply directly for the jobs you are interested in. Please keep in mind that the student jobs for English speaking students, will get the tag 'English speaking'.



**You can find a student job
via interim offices such
as: Synergie interim, Itzo,
Konvert**

For more info:







Taxes

Taxes in Belgium

All guests, staying in Belgium for more 3 months, are considered as 'Resident in Belgium' and will therefore receive several official letters and invoices regarding taxes. More info:

Province tax:

35 euros to be paid by everybody living in this province (Limburg). If you have the so-called 'VT-status' of your mutuality (meaning you have no or very low income), you can apply for a 50% reduction by sending the Province a proof of your VT-status (put a personal sticker of your mutuality on the invoice and send it back to the sender). You will then receive a new invoice for 17.5 euros.

Waste tax:

This invoice, sent yearly by a company called 'Limburg.Net', asks you to pay for waste collection. However if you already pay a similar fee, directly to your landlord, you can inform the company about this.

General Income Tax

In May/June you might receive a 'brown envelope', containing your tax declaration in Belgium and an extra envelope.

For those who had no Belgian income at all in the previous year:

- First go to 'My Academic file' and print a copy of your 'Proof of Enrolment' at UHasselt.
- Then take the red form in the envelope, go to the last page and look for the word '*Datum*' on the bottom of the page, fill in the current date and sign the document at '*Handtekening*'.
- Put this red form along with your 'Proof of Enrolment' in the extra envelope and send it by mail to the address mentioned in 'Ledeberg'. If you fail to do so you could get a fine!

For those who had Belgian income in the previous year:

- Contact the phone number on the envelope for help.



**The General Income Tax
must be submitted by June
29th, 2025!**



Academic support

Do you need advice or help? If you are looking for information or a listening ear, we are ready to help you. Contact us, and we will be happy to help you.

Student Point

During your studies at Hasselt University you get the necessary support as a student.

Do you have a question and you do not immediately know whom to contact?

You can visit student point in Campus Hasselt or Diepenbeek or send an email to studentpoint@uhasselt.be.



Academic advisors

Do you have questions about the programme, curriculum, regulations on education and examination, exam results or your study progress? Or about the design of your study programme, or the possibility of modifying it? Do you wish to apply for one or more exemption(s)? Your academic advisor will be glad to help you.



Faculty coordinators

(exclusively for exchange students)

If you are an exchange student and have questions concerning your choice of subjects, exam schedules or other academic matters, please contact your faculty coordinator.





Study coaches

Do you have questions or doubts about your study method or planning? Do you experience stress, procrastination, lack of concentration or fear of failure? If so, you can contact the study coach of your programme.

studycoaching@uhasselt.be



Student psychologists

You can turn to the student psychologist for support and assistance with all sorts of personal, relational, family and other problems. The psychologist can, if needed, also refer you to more specialized help.

studentenpsycholoog@uhasselt.be



Reasonable facilities

Are you diagnosed with dyslexia, AD(H)D, ASD, a chronic health condition or another disability?

Do you combine your studies with top-level sports, working in employment, family care or other circumstances?

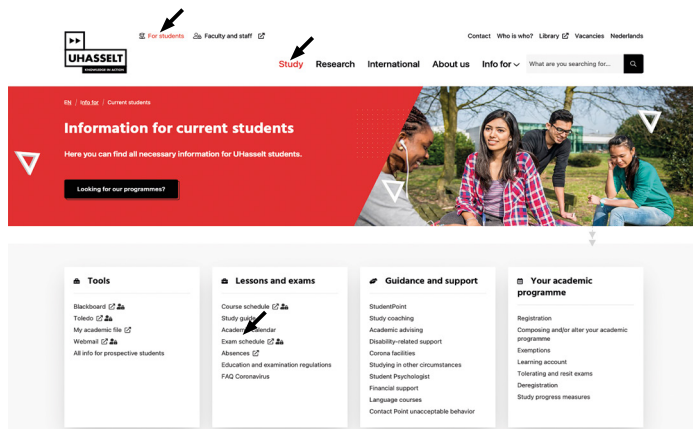
In that case, you can request reasonable facilities in educational activities and/or exams via your electronic student file - 'special circumstances'.

faciliteiten@uhasselt.be



Finding information

It all starts with the correct information. A lot of helpful information can be found on our website www.uhasselt.be/en. Check it out!



By clicking on **'Study'** or **'for students'** you will find all the information you need. You can check your academic file, your schedules, but also information about accommodation, life on campus, coaching and support, regulations and administration, and much more.

In the **study guide** you will find all the information about your programme and courses. For each course you can check the credits, the teaching period, teaching methods, contact persons, a brief description of the content, the learning outcomes, course material, evaluation methods, ...



Academic calendar

The academic calendar of each program contains the dates of teaching and examination periods, deadlines for deregistration for course units, days off, holidays, ...



Course schedule + My timetable

In your course schedule, you can find when and where you have classes. Since course schedules do not always follow a recurrent structure, it is wise to check it daily and weekly for alterations.

Visit "MyTimetable": mytimetable.uhasselt.be/schedule and take a look at the manual via this QR code.



Exam schedule

The academic calendar lists when the examination period starts and ends. The detailed exam schedule will be published via your online schedule "MyTimetable" at least four weeks before the start of the examination period at the latest.



Check blackboard at least one day before each lecture, so you can prepare properly for class (e.g. reading assignments, downloading or printing lecture slides, ...).

Academic programme

Upon arrival in Belgium, you finish your official student enrollment at Hasselt University. Make an appointment beforehand. As a final step it is vital that you design your academic programme for the entire upcoming academic year in your academic file. Please do this as soon as possible. Designing your academic programme is a yearly process. For questions regarding this you can contact the academic advisors.

After you have requested your academic programme, you can access your course schedule via “MyTimetable” on the website and the electronic learning platform Blackboard.

Blackboard

Blackboard is the virtual learning environment where you find all the information you need about each of your courses (announcements, course information, course material, changes in course schedule, ...)

How to use Blackboard?

- Go to bb.uhasselt.be
- Login with your user-id and password
- You will see an overview of the courses you are registered for, as well as the announcements for each course, lecture slides, extra reading material, ...

You can also download the app if you prefer checking blackboard on your smartphone.

Note that the Faculty of Engineering Technology students use Toledo instead of Blackboard.



Don't forget to compose your academic programme.

My student file

'My student file' is the door virtual place to find your personal information, download forms and check your exam results.



Study progress measures

The study progress measures are very important for every student in order to continue with the programme and to proceed to the next academic year.

The study progress measures are based on:

- your study success rate
- the amount of enrollments for a course
- binding conditions
- the balance of your learning account



Educational methods and learning

Even if you have completed a university education, studying at Hasselt University will require some adjustment because our educational concept differs from that of your home country and other universities in Belgium.

If you need support, make an appointment with your study coach.

Education at Hasselt University consists of two key components:

Contact moments

Most programmes combine lectures and practical sessions.

During a **lecture**, a professor teaches in front of a (large) group of students. Depending on the group size, there may be (a lot of) interaction between the professor and the students.

Practical sessions, also known as 'work meetings', 'practica' etc. are mostly organised in smaller groups. You may have to prepare for them at home. You will learn how to apply and discuss your course material during a practical session.

Although not always mandatory, attending all your lectures and practical sessions is helpful.

Autonomous learning

Hasselt University has a unique approach to learning. You can study more or less autonomously, guided by lectures and study instructions from the professors.





Evaluation

All programmes evaluate their students in various ways.

There are the classic exams, but students are also assessed throughout the year. You can be evaluated on your academic writing, group assignments, presentations, exams,...

You will not only be evaluated on your academic skills, but also on your professional skills, e.g. presentation skills.

A few weeks after you have finished your exams, you will find your results in 'my academic file'. After each evaluation, it is possible to get feedback from your lecturers. It is advised to ask for this feedback so you know how to improve next time.

Did you do well?

You pass your exam if you obtain a 10/20 or more. If you did not pass the course, you get a second chance in August for most courses.

Every grade between 10/20 and 14/20 means you did well. Higher results are rather exceptional.

At Hasselt University, you get a distinction if you have a weighted average of 68%. You graduate with a great distinction if your weighted average is 77% and with the greatest distinction if your weighted average is 85%. You can find more information in the Education, Examination and Legal Position Regulations for students (EEL regulations).

More information about study coaching and some study tips:







Student services & student life

Library

As a registered student or visitor you are allowed to use the UHasselt library. More info: bibliotheek.uhasselt.be/en

In order to offer our students and staff members the widest possible range of (electronic) literature, UHasselt Library collaborates with Hasselt Library Limburg, Maastricht University and KU Leuven.

Library Hasselt Limburg, Dusartplein
Martelarenlaan 17B, 3500 Hasselt
Open mo-sat from 10 am till 18 pm

University restaurant

Sandwiches, drinks, sweets, lunches are available in the university restaurants in Diepenbeek and Hasselt. Hasselt University offers students a discount if you pay your meal with your student/staff/visitor card.

When you register your student/staff/visitor card on the "ping ping website", you can use the copy machines, buy a sports card in the Studentensport Limburg app and buy lunch at Hasselt University restaurants.



Study Materials

You can purchase your study material, courses and textbooks in the Campusshop XOD.

The Campusshop has two locations:

- At the Agora of **Campus Diepenbeek** (Building D) there is an extensive student shop. 011 26 87 24
- At the Panopticum of **Campus Hasselt** there is a service point for the law, the social and mobility science faculty. 011 26 80 65

You can find your personal book list in your digital student file. Online orders can be picked up in the Campus Shop or delivered to your home for a small fee. You can buy UHasselt-merchandising and -stationery at the Campusshop.

campusboekhandel@uhasselt.be

Purchasing used books can be done through re-bookIT. Before purchasing be sure to bring your book list
rebookit.be/business-info

Every year the Computer Service Department of UHasselt, in collaboration with PXL, offers two laptops with a very beneficial price-quality ratio. You are also able to buy a MacBook with a special discount for UHasselt students.

www.uhasselt.be/laptop-EN





Internet and Email

Upon enrolment students are automatically given a user-ID and a password. You also need those credentials to login to Blackboard, the digital learning environment used by Hasselt University (direct access: bb.uhasselt.be).

You can find "internet corners" on the campuses. Here you can quickly check your mail or search the internet on a desktop computer.

Furthermore, PC-rooms are available, which can be used for individual study or group projects. Copying software and using your own software is strictly forbidden.

In case of IT related issues scan this QR code.



Green Office

If you are interested in sustainable activities or if you have questions about this subject, the Green Office is the place to be! We are a team that wants to put sustainability on the map at Hasselt University. We are always looking for new volunteers so feel free to contact us at greenoffice@uhasselt.be if you would like to join our team. We are looking forward to meeting you!

www.uhasselt.be/greenoffice

Silence Point

In this room on campus Diepenbeek (building D - C50 - C51) and Campus Hasselt (FR 1.06A), you are very welcome to relax and find peace of mind, pray, think or get away from the rush of everyday life.





The International Council

The International Council (IC) is part of StuRa (the Student Council), but specifically for international students. The International Council represents the international students and takes care of any concerns the students might have during their stay in Belgium.

stura.international@student.uhasselt.be

 International student council of Hasselt university

Buddy Programme

The International Office organises a Buddy Programme: a match-up between a Hasselt University student living in Belgium and an international student. This may lend you a helping hand as you settle down and facilitate your integration at Hasselt University.



Expat centre

Expat Centre Limburg is the welcome desk for internationals such as expats and other highly skilled foreign talents living and or working in the Belgian province of Limburg. Expat Centre Limburg helps and informs expats and their families so they can easily settle into their new living and working environment. As an international you can request information about your region, find out about events that are organised especially for the international community and join the growing community Limburgers Worldwide®. www.expatscentre limburg.com and welcome@expatscentre limburg.com.



Limburgers Worldwide

Limburgers Worldwide offers a unique platform connecting individuals with ties to the Belgian province of Limburg around the world. Whether you're an expatriate, a former resident, or simply share an affinity for Limburg, our network is designed to foster connections and keep you informed about news and socio-economic developments in the region. Completely free and presented entirely in English, we aim to provide a reliable source of information and a vibrant community for global citizens like yourself.

Whether you're indulging in a stroopwafel in Amsterdam, admiring the Statue of Liberty in New York, or reminiscing about the picturesque hills of Limburg, Limburgers Worldwide keeps the spirit of Limburg alive across continents!



Enactus

The Enactus program provides a platform for teams of university students to take entrepreneurial action for others while using business principles and innovation to further the Global Goals and create a sustainable positive impact on people, planet and prosperity.

enactus.org

International student unions

Erasmus Student Network (ESN)

esn@student.uhasselt.be

www.facebook.com/esnhasselt

Transportation Sciences Network (TSN)

www.transportationsciencesnetwork.org/

Joint Organization of Statistics Scholars

[f](#) 'JOSS - Students, Staff and Alumni of Master in Statistics UHasselt'

Sports

If you want to practise sports, there are many possibilities. 'Studentensport Limburg' offers an extensive selection of sports to students, from ball games to bodyshape workouts, dance classes and combat-centered sports. All these activities are organised on or around the campuses of Hasselt and Diepenbeek.

Discover all sport activities and schedules on the website or in the Studentensport Limburg app.

studentensportlimburg.be/en/





The sports card costs €30 and gives you access to all activities of the weekly program. It gives you free entrance in the swimming pool of Hasselt and Genk, free entrance in the ice rink in Hasselt and also discounts on climbing, padel or renting out a mountain bike.

Your Belgian health insurance will (partially) refund the cost of the sports card. Just download the form in the app.

If you are a competitive sporter and you want to participate in student competitions contact the sport services.

Sports coordinators:

Katleen De Wit (katleen.dewit@uhasselt.be)

Martine Libens (martine.libens@uhasselt.be)

Culture

Expand your horizon, visit some historical towns!

BRUSSELS is the capital of Belgium and the administrative centre of the European Union. The vibrant atmosphere of Brussels is enhanced by picturesque medieval streets, lively squares, impressive monuments, interesting restaurants and an active cultural life. The most famous attractions are the Grand Place (main square), the Atomium and the Manneken Pis statue.

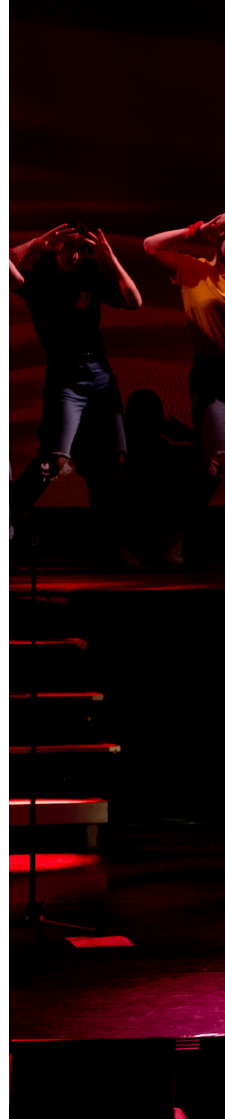
ANTWERP, daughter of the river Scheldt, is the second largest city in Belgium. It is a splendid city with numerous architectural highlights, most of which date from the 16th and the 17th century. Antwerp is also known as the diamond centre of the World. If diamonds really are a girls best friend, then most of the ladies amongst you will not want to miss out on a visit to the diamond district near the railway station.

BRUGES is called: 'the Venice of the north'. This splendid medieval city is one of Belgiums crown jewels. In no other European city are the feel and look of medieval times as present as in this city close to the North Sea. As a testament to its medieval beauty, Bruges has been named an UNESCO World Heritage Site.

GHENT is the fourth largest city in Belgium with around 259,000 inhabitants. It is not as big as Antwerp but bigger than Bruges. It is also less well-known to tourists than the often praised Bruges. However, for some people Ghent is the real diamond of Flanders and Belgium. In a unique way, Ghent has managed to preserve its medieval power while keeping up with modern times.

AACHEN is a city in Germany that lives and breathes Europe. It is practically Europe in miniature. Aachen, on the border with Belgium and the Netherlands, has encapsulated the spirit, values and ideals of Europe since the days of Charlemagne. Indeed the Charlemagne Prize for services to European unity has been awarded at Aachen's town hall since 1950.

MAASTRICHT is in the southeastern Netherlands and is the capital and largest city of the province of Dutch Limburg. It is located on both sides of the Meuse (Dutch: Maas), at the point where the Jeker joins it. The city is divided into different districts, each with its own unique character and charm.





Cultural activities @uhasselt

UHasselt also offers cultural and other activities.

Discover them on www.uhasselt.be/culture

Financial allowances for students:

- **Cashback Culture:** Receive a 50% discount on top of the student rate on performances in the cultural centers in Flanders, the Nieuwstedelijk, Cinema Zed. You can also use the Cashback Culture for a Museumpass or museum tickets.
- **Cheap tickets for performances at CCHA:** You can buy a ticket for all performances at the Cultural Centre of Hasselt at 50% discount upon presentation of your student card. Afterwards, you can also apply for the Cashback Culture.
- **Projectgrant:** Would you like to organise a nice activity yourself? A cooking workshop, comedy, free-podium,...? Apply for our projectgrant and receive up to 300 euros for your activity!

Check the regulations in your student file.

MUSEUMPAS

Get your Museumpas with a 50% discount and visit more than 200 museums in Belgium! You can now also request a 50% discount on individual museum tickets.

Find the application form in your student file



Useful addresses & translations

Useful addresses

Groceries

You can do groceries in for example:

- LIDL
- ALDI
- Carrefour
- SPAR
- Delhaize
- Action is a good shop for all kinds of non food items.

Laundry

Hasselt:

- WashNDry, Demerstraat 107
- Biancha, Kuringersteenweg 93
- Miele, Overdemerstraat 118
- Wasbar, Grote Markt

Diepenbeek:

- Speed Queen, Dorpsstraat 4
- Mr. EcoWash Diepenbeek, Nieuwstraat 167
- Wassalon Prima Wash, Nierstraat 28

Copy services

Hasselt:

- Drukpunt Koning Boudewijnlaan 4
- Druk & Copyservice Bampslaan 10

Places of worship

Catholic churches

Diepenbeek:

- H.Hart Church , Patersplein Rooierheide Diepenbeek

Hasselt:

- Cathedral: Vismarkt w/n
- Church Godsheide: Kiezelstraat w/n
- Church Sint-Katarinawijk: Sint-Katarinaplein w/n

Protestant churches

Hasselt:

- United Protestant Church: Kuringersteenweg 81

Evangelical churches

Hasselt:

- Evangelical Community "De Zaaier": Runkstersteenweg 303

Diepenbeek:

- Evangelical Community Diepenbeek: Begoniastraat 9

Orthodox churches

Genk:

- Greek Orthodox Church: G.A. Galopinstraat 21
- Ukranian Orthodox Church: Hulshagenstraat w/n

Mosques

Hasselt:

- Badr Mosque: Mouterijstraat w/n





Places of worship

Jewish synagogues

Antwerp:

- Synagogue Shomré Hadass: Terliitstraat 35

Brussels:

- The Great Synagogue: Regentschapsstraat

Buddhist stupa

Schoten:

- Buddhist Stupa: Kruispadstraat 33

Pentacosta church

- Wimmertingenstraat 5, 3501 Hasselt

Embassies

A list of foreign embassies in Belgium can be found via this QR code.



Police

Local police Limburg Hoofdstad (LRH)
Zwarte-brugstraat 6, Hasselt

Useful translations

ENGLISH - DUTCH

HEALTH

General practitioner - Geneesheer / arts
Pharmacist - Apotheker
Dentist - Tandarts
Physiotherapist - Kinesist
Insurance - Verzekering

NUMBERS

one - één
two - twee
three - drie
four - vier
five - vijf
six - zes
seven - zeven
eight - acht
nine - negen
ten - tien

AVAILABILITY

Open - Open
Closed - Gesloten
Before noon/morning (am) - Voormiddag (vm)
Afternoon (pm) - Namiddag (nm)
Holiday - Verlof/vakantie

DAYS OF THE WEEK

Monday (Mon) - Maandag (Ma)
Tuesday (Tues) - Dinsdag (Di)
Wednesday (Weds) - Woensdag (Wo)
Thursday (Thurs) - Donderdag (Do)
Friday (Fri) - Vrijdag (Vr)
Saturday (Sat) - Zaterdag (Za)
Sunday (Sun) - Zondag (Zo)

ACCOMMODATION

For rent - Te huur
For sale - Te koop

GENERAL EXPRESSIONS

How much does this cost? - Hoeveel kost dit?
Where is the bus stop? - Waar is de bushalte?
What do you call this? - Hoe heet dit?
Where can I find a doctor? -
Waar vind ik een dokter?
Thank you - Dank u / Bedankt
Here you are - Alstublieft
Hello - Goedendag
See you/goodbye - Tot ziens

FOOD, BEVERAGES AND OTHER NECESSITIES

Beer - Bier
Bread - Brood
Milk - Melk
Coffee - Koffie
Cheese - Kaas
Ham - Hesp
Eggs - Eieren
Washing powder/detergent -
Waspoeder
Blanket - Deken
Pillow - Kussen
Sheet - Laken
Mattress cover - Matrasbeschermer
Duvet - Dekbed
Towel - Handdoek
Kitchen towel - Keukenhanddoek



Campus Hasselt | Martelarenlaan 42 | BE 3500 Hasselt
Campus Diepenbeek | Agoralaan Gebouw D | BE 3590 Diepenbeek
www.uhasselt.be/en